

Solving nonlinear ODE and PDE problems

Hans Petter Langtangen^{1,2}

¹Center for Biomedical Computing, Simula Research Laboratory

²Department of Informatics, University of Oslo

2016

Note: Preliminary version (expect typos).

Contents

1 Introduction of basic concepts	4
1.1 Linear versus nonlinear equations	4
1.2 A simple model problem	5
1.3 Linearization by explicit time discretization	6
1.4 Exact solution of nonlinear algebraic equations	6
1.5 Linearization	7
1.6 Picard iteration	7
1.7 Linearization by a geometric mean	9
1.8 Newton's method	10
1.9 Relaxation	11
1.10 Implementation and experiments	12
1.11 Generalization to a general nonlinear ODE	13
1.12 Systems of ODEs	17
2 Systems of nonlinear algebraic equations	18
2.1 Picard iteration	19
2.2 Newton's method	19
2.3 Stopping criteria	21
2.4 Example: A nonlinear ODE model from epidemiology	22
3 Linearization at the differential equation level	23
3.1 Explicit time integration	23
3.2 Backward Euler scheme and Picard iteration	24
3.3 Backward Euler scheme and Newton's method	25
3.4 Crank-Nicolson discretization	27
4 Discretization of 1D stationary nonlinear differential equations	28
4.1 Finite difference discretization	28
4.2 Solution of algebraic equations	29
4.3 Galerkin-type discretization	33
4.4 Picard iteration defined from the variational form	34
4.5 Newton's method defined from the variational form	34

5 Multi-dimensional PDE problems	36
5.1 Finite element discretization	36
5.2 Finite difference discretization	39
5.3 Continuation methods	41
6 Exercises	41
References	49
A Symbolic nonlinear finite element equations	50
A.1 Finite element basis functions	50
A.2 The group finite element method	50
A.3 Numerical integration of nonlinear terms by hand	52
A.4 Finite element discretization of a variable coefficient Laplace term	53
Index	57

List of Exercises and Problems

Problem	1	Determine if equations are nonlinear or not	p. 41
Exercise	2	Derive and investigate a generalized logistic ...	p. 42
Problem	3	Experience the behavior of Newton's method	p. 42
Problem	4	Compute the Jacobian of a 2×2 system	p. 43
Problem	5	Solve nonlinear equations arising from a vibration ...	p. 43
Exercise	6	Find the truncation error of arithmetic mean ...	p. 43
Problem	7	Newton's method for linear problems	p. 44
Exercise	8	Discretize a 1D problem with a nonlinear coefficient ...	p. 44
Exercise	9	Linearize a 1D problem with a nonlinear coefficient ...	p. 44
Problem	10	Finite differences for the 1D Bratu problem	p. 45
Problem	11	Integrate functions of finite element expansions ...	p. 45
Problem	12	Finite elements for the 1D Bratu problem	p. 46
Exercise	13	Discretize a nonlinear 1D heat conduction ...	p. 47
Exercise	14	Use different symbols for different approximations ...	p. 47
Exercise	15	Derive Picard and Newton systems from a variational ...	p. 48
Exercise	16	Derive algebraic equations for nonlinear 1D ...	p. 48
Exercise	17	Differentiate a highly nonlinear term	p. 48
Exercise	18	Crank-Nicolson for a nonlinear 3D diffusion ...	p. 48
Exercise	19	Find the sparsity of the Jacobian	p. 49
Problem	20	Investigate a 1D problem with a continuation ...	p. 49

1 Introduction of basic concepts

1.1 Linear versus nonlinear equations

Algebraic equations. A linear, scalar, algebraic equation in x has the form

$$ax + b = 0,$$

for arbitrary real constants a and b . The unknown is a number x . All other algebraic equations, e.g., $x^2 + ax + b = 0$, are nonlinear. The typical feature in a nonlinear algebraic equation is that the unknown appears in products with itself, like x^2 or $e^x = 1 + x + \frac{1}{2}x^2 + \frac{1}{3!}x^3 + \dots$.

We know how to solve a linear algebraic equation, $x = -b/a$, but there are no general methods for finding the exact solutions of nonlinear algebraic equations, except for very special cases (quadratic equations are a primary example). A nonlinear algebraic equation may have no solution, one solution, or many solutions. The tools for solving nonlinear algebraic equations are *iterative methods*, where we construct a series of linear equations, which we know how to solve, and hope that the solutions of the linear equations converge to the solution of the nonlinear equation we want to solve. Typical methods for nonlinear algebraic equations are Newton's method, the Bisection method, and the Secant method.

Differential equations. The unknown in a differential equation is a function and not a number. In a linear differential equation, all terms involving the unknown functions are linear in the unknown functions or their derivatives. Linear here means that the unknown function, or a derivative of it, is multiplied by a number or a known function. All other differential equations are non-linear.

The easiest way to see if an equation is nonlinear, is to spot nonlinear terms where the unknown functions or their derivatives are multiplied by each other. For example, in

$$u'(t) = -a(t)u(t) + b(t),$$

the terms involving the unknown function u are linear: u' contains the derivative of the unknown function multiplied by unity, and au contains the unknown function multiplied by a known function. However,

$$u'(t) = u(t)(1 - u(t)),$$

is nonlinear because of the term $-u^2$ where the unknown function is multiplied by itself. Also

$$\frac{\partial u}{\partial t} + u \frac{\partial u}{\partial x} = 0,$$

is nonlinear because of the term uu_x where the unknown function appears in a product with itself or one of its derivatives. (Note here that we use different notations for derivatives: u' or du/dt for a function $u(t)$ of one variable, $\frac{\partial u}{\partial t}$ or u_t for a function of more than one variable.)

Another example of a nonlinear equation is

$$u'' + \sin(u) = 0,$$

because $\sin(u)$ contains products of u if we expand the function in a Taylor series:

$$\sin(u) = u - \frac{1}{3!}u^3 + \dots$$

Mathematical proof of linearity.

To really prove mathematically that some differential equation in an unknown u is linear, show for each term $T(u)$ that with $u = au_1 + bu_2$ for constants a and b ,

$$T(au_1 + bu_2) = aT(u_1) + bT(u_2).$$

For example, the term $T(u) = (\sin^2 t)u'(t)$ is linear because

$$\begin{aligned} T(au_1 + bu_2) &= (\sin^2 t)(au_1(t) + bu_2(t)) \\ &= a(\sin^2 t)u_1(t) + b(\sin^2 t)u_2(t) \\ &= aT(u_1) + bT(u_2). \end{aligned}$$

However, $T(u) = \sin u$ is nonlinear because

$$T(au_1 + bu_2) = \sin(au_1 + bu_2) \neq a \sin u_1 + b \sin u_2.$$

1.2 A simple model problem

A series of forthcoming examples will explain how to tackle nonlinear differential equations with various techniques. We start with the (scaled) logistic equation as model problem:

$$u'(t) = u(t)(1 - u(t)). \quad (1)$$

This is a nonlinear ordinary differential equation (ODE) which will be solved by different strategies in the following. Depending on the chosen time discretization of (1), the mathematical problem to be solved at every time level will either be a linear algebraic equation or a nonlinear algebraic equation. In the former case, the time discretization method transforms the nonlinear ODE into linear subproblems at each time level, and the solution is straightforward to find since linear algebraic equations are easy to solve. However, when the time discretization leads to nonlinear algebraic equations, we cannot (except in very rare cases) solve these without turning to approximate, iterative solution methods.

The next subsections introduce various methods for solving nonlinear differential equations, using (1) as model. We shall go through the following set cases:

- explicit time discretization methods (with no need to solve nonlinear algebraic equations)
- implicit Backward Euler discretization, leading to nonlinear algebraic equations solved by
 - an exact analytical technique
 - Picard iteration based on manual linearization
 - a single Picard step
 - Newton's method
- implicit Crank-Nicolson discretization and linearization via a geometric mean formula

Thereafter, we compare the performance of the various approaches. Despite the simplicity of (1), the conclusions reveal typical features of the various methods in much more complicated nonlinear PDE problems.

1.3 Linearization by explicit time discretization

Time discretization methods are divided into explicit and implicit methods. Explicit methods lead to a closed-form formula for finding new values of the unknowns, while implicit methods give a linear or nonlinear system of equations that couples (all) the unknowns at a new time level. Here we shall demonstrate that explicit methods constitute an efficient way to deal with nonlinear differential equations.

The Forward Euler method is an explicit method. When applied to (1), sampled at $t = t_n$, it results in

$$\frac{u^{n+1} - u^n}{\Delta t} = u^n(1 - u^n),$$

which is a *linear* algebraic equation for the unknown value u^{n+1} that we can easily solve:

$$u^{n+1} = u^n + \Delta t u^n(1 - u^n).$$

The nonlinearity in the original equation poses in this case no difficulty in the discrete algebraic equation. Any other explicit scheme in time will also give only linear algebraic equations to solve. For example, a typical 2nd-order Runge-Kutta method for (1) leads to the following formulas:

$$\begin{aligned} u^* &= u^n + \Delta t u^n(1 - u^n), \\ u^{n+1} &= u^n + \Delta t \frac{1}{2} (u^n(1 - u^n) + u^*(1 - u^*)). \end{aligned}$$

The first step is linear in the unknown u^* . Then u^* is known in the next step, which is linear in the unknown u^{n+1} .

1.4 Exact solution of nonlinear algebraic equations

Switching to a Backward Euler scheme for (1),

$$\frac{u^n - u^{n-1}}{\Delta t} = u^n(1 - u^n), \quad (2)$$

results in a nonlinear algebraic equation for the unknown value u^n . The equation is of quadratic type:

$$\Delta t(u^n)^2 + (1 - \Delta t)u^n - u^{n-1} = 0,$$

and may be solved exactly by the well-known formula for such equations. Before we do so, however, we will introduce a shorter, and often cleaner, notation for nonlinear algebraic equations at a given time level. The notation is inspired by the natural notation (i.e., variable names) used in a program, especially in more advanced partial differential equation problems. The unknown in the algebraic equation is denoted by u , while $u^{(1)}$ is the value of the unknown at the previous time level (in general, $u^{(\ell)}$ is the value of the unknown ℓ levels back in time). The notation will be frequently used in later sections. What is meant by u should be evident from the context: u may be 1) the exact solution of the ODE/PDE problem, 2) the numerical approximation to the exact solution, or 3) the unknown solution at a certain time level.

The quadratic equation for the unknown u^n in (2) can, with the new notation, be written

$$F(u) = \Delta t u^2 + (1 - \Delta t)u - u^{(1)} = 0. \quad (3)$$

The solution is readily found to be

$$u = \frac{1}{2\Delta t} \left(-1 + \Delta t \pm \sqrt{(1 - \Delta t)^2 + 4\Delta t u^{(1)}} \right). \quad (4)$$

Now we encounter a fundamental challenge with nonlinear algebraic equations: the equation may have more than one solution. How do we pick the right solution? This is in general a hard problem. In the present simple case, however, we can analyze the roots mathematically and provide an answer. The idea is to expand the roots in a series in Δt and truncate after the linear term since the Backward Euler scheme will introduce an error proportional to Δt anyway. Using `sympy` we find the following Taylor series expansions of the roots:

```
>>> import sympy as sym
>>> dt, u_1, u = sym.symbols('dt u_1 u')
>>> r1, r2 = sym.solve(dt*u**2 + (1-dt)*u - u_1, u) # find roots
>>> r1
(dt - sqrt(dt**2 + 4*dt*u_1 - 2*dt + 1) - 1)/(2*dt)
>>> r2
(dt + sqrt(dt**2 + 4*dt*u_1 - 2*dt + 1) - 1)/(2*dt)
>>> print r1.series(dt, 0, 2) # 2 terms in dt, around dt=0
-1/dt + 1 - u_1 + dt*(u_1**2 - u_1) + 0(dt**2)
>>> print r2.series(dt, 0, 2)
u_1 + dt*(-u_1**2 + u_1) + 0(dt**2)
```

We see that the `r1` root, corresponding to a minus sign in front of the square root in (4), behaves as $1/\Delta t$ and will therefore blow up as $\Delta t \rightarrow 0!$ Since we know that u takes on finite values, actually it is less than or equal to 1, only the `r2` root is of relevance in this case: as $\Delta t \rightarrow 0$, $u \rightarrow u^{(1)}$, which is the expected result.

For those who are not well experienced with approximating mathematical formulas by series expansion, an alternative method of investigation is simply to compute the limits of the two roots as $\Delta t \rightarrow 0$ and see if a limit unreasonable:

```
>>> print r1.limit(dt, 0)
-oo
>>> print r2.limit(dt, 0)
u_1
```

1.5 Linearization

When the time integration of an ODE results in a nonlinear algebraic equation, we must normally find its solution by defining a sequence of linear equations and hope that the solutions of these linear equations converge to the desired solution of the nonlinear algebraic equation. Usually, this means solving the linear equation repeatedly in an iterative fashion. Alternatively, the nonlinear equation can sometimes be approximated by one linear equation, and consequently there is no need for iteration.

Constructing a linear equation from a nonlinear one requires *linearization* of each nonlinear term. This can be done manually as in Picard iteration, or fully algorithmically as in Newton's method. Examples will best illustrate how to linearize nonlinear problems.

1.6 Picard iteration

Let us write (3) in a more compact form

$$F(u) = au^2 + bu + c = 0,$$

with $a = \Delta t$, $b = 1 - \Delta t$, and $c = -u^{(1)}$. Let u^- be an available approximation of the unknown u . Then we can linearize the term u^2 simply by writing u^-u . The resulting equation, $\hat{F}(u) = 0$, is now linear and hence easy to solve:

$$F(u) \approx \hat{F}(u) = au^-u + bu + c = 0.$$

Since the equation $\hat{F} = 0$ is only approximate, the solution u does not equal the exact solution u_e of the exact equation $F(u_e) = 0$, but we can hope that u is closer to u_e than u^- is, and hence it makes sense to repeat the procedure, i.e., set $u^- = u$ and solve $\hat{F}(u) = 0$ again. There is no guarantee that u is closer to u_e than u^- , but this approach has proven to be effective in a wide range of applications.

The idea of turning a nonlinear equation into a linear one by using an approximation u^- of u in nonlinear terms is a widely used approach that goes under many names: *fixed-point iteration*, the method of *successive substitutions*, *nonlinear Richardson iteration*, and *Picard iteration*. We will stick to the latter name.

Picard iteration for solving the nonlinear equation arising from the Backward Euler discretization of the logistic equation can be written as

$$u = -\frac{c}{au^- + b}, \quad u^- \leftarrow u.$$

The \leftarrow symbols means assignment (we set u^- equal to the value of u). The iteration is started with the value of the unknown at the previous time level: $u^- = u^{(1)}$.

Some people prefer an explicit iteration counter as superscript in the mathematical notation. Let u^k be the computed approximation to the solution in iteration k . In iteration $k + 1$ we want to solve

$$au^k u^{k+1} + bu^{k+1} + c = 0 \quad \Rightarrow \quad u^{k+1} = -\frac{c}{au^k + b}, \quad k = 0, 1, \dots$$

Since we need to perform the iteration at every time level, the time level counter is often also included (recall that $c = -u^{n-1}$):

$$au^{n,k} u^{n,k+1} + bu^{n,k+1} - u^{n-1} = 0 \quad \Rightarrow \quad u^{n,k+1} = \frac{u^{n-1}}{au^{n,k} + b}, \quad k = 0, 1, \dots,$$

with the start value $u^{n,0} = u^{n-1}$ and the final converged value $u^n = u^{n,k}$ for sufficiently large k .

However, we will normally apply a mathematical notation in our final formulas that is as close as possible to what we aim to write in a computer code and then it becomes natural to use u and u^- instead of u^{k+1} and u^k or $u^{n,k+1}$ and $u^{n,k}$.

Stopping criteria. The iteration method can typically be terminated when the change in the solution is smaller than a tolerance ϵ_u :

$$|u - u^-| \leq \epsilon_u,$$

or when the residual in the equation is sufficiently small (ϵ_r),

$$|F(u)| = |au^2 + bu + c| < \epsilon_r.$$

A single Picard iteration. Instead of iterating until a stopping criterion is fulfilled, one may iterate a specific number of times. Just one Picard iteration is popular as this corresponds to the intuitive idea of approximating a nonlinear term like $(u^n)^2$ by $u^{n-1}u^n$. This follows from the linearization u^-u^n and the initial choice of $u^- = u^{n-1}$ at time level t_n . In other words, a single Picard iteration corresponds to using the solution at the previous time level to linearize nonlinear terms. The resulting discretization becomes (using proper values for a , b , and c)

$$\frac{u^n - u^{n-1}}{\Delta t} = u^n(1 - u^{n-1}), \quad (5)$$

which is a linear algebraic equation in the unknown u^n , and therefore we can easily solve for u^n , and there is no need for any alternative notation.

We shall later refer to the strategy of taking one Picard step, or equivalently, linearizing terms with use of the solution at the previous time step, as the *Picard1* method. It is a widely used approach in science and technology, but with some limitations if Δt is not sufficiently small (as will be illustrated later).

Notice.

Equation (5) does not correspond to a “pure” finite difference method where the equation is sampled at a point and derivatives replaced by differences (because the u^{n-1} term on the right-hand side must then be u^n). The best interpretation of the scheme (5) is a Backward Euler difference combined with a single (perhaps insufficient) Picard iteration at each time level, with the value at the previous time level as start for the Picard iteration.

1.7 Linearization by a geometric mean

We consider now a Crank-Nicolson discretization of (1). This means that the time derivative is approximated by a centered difference,

$$[D_t u = u(1 - u)]^{n+\frac{1}{2}},$$

written out as

$$\frac{u^{n+1} - u^n}{\Delta t} = u^{n+\frac{1}{2}} - (u^{n+\frac{1}{2}})^2. \quad (6)$$

The term $u^{n+\frac{1}{2}}$ is normally approximated by an arithmetic mean,

$$u^{n+\frac{1}{2}} \approx \frac{1}{2}(u^n + u^{n+1}),$$

such that the scheme involves the unknown function only at the time levels where we actually compute it. The same arithmetic mean applied to the nonlinear term gives

$$(u^{n+\frac{1}{2}})^2 \approx \frac{1}{4}(u^n + u^{n+1})^2,$$

which is nonlinear in the unknown u^{n+1} . However, using a *geometric mean* for $(u^{n+\frac{1}{2}})^2$ is a way of linearizing the nonlinear term in (6):

$$(u^{n+\frac{1}{2}})^2 \approx u^n u^{n+1}.$$

Using an arithmetic mean on the linear $u^{n+\frac{1}{2}}$ term in (6) and a geometric mean for the second term, results in a linearized equation for the unknown u^{n+1} :

$$\frac{u^{n+1} - u^n}{\Delta t} = \frac{1}{2}(u^n + u^{n+1}) - u^n u^{n+1},$$

which can readily be solved:

$$u^{n+1} = \frac{1 + \frac{1}{2}\Delta t}{1 + \Delta t u^n - \frac{1}{2}\Delta t} u^n.$$

This scheme can be coded directly, and since there is no nonlinear algebraic equation to iterate over, we skip the simplified notation with u for u^{n+1} and $u^{(1)}$ for u^n . The technique with using a geometric average is an example of transforming a nonlinear algebraic equation to a linear one, without any need for iterations.

The geometric mean approximation is often very effective for linearizing quadratic nonlinearities. Both the arithmetic and geometric mean approximations have truncation errors of order Δt^2 and are therefore compatible with the truncation error $\mathcal{O}(\Delta t^2)$ of the centered difference approximation for u' in the Crank-Nicolson method.

Applying the operator notation for the means and finite differences, the linearized Crank-Nicolson scheme for the logistic equation can be compactly expressed as

$$[D_t u = \bar{u}^t - \bar{u}^{2t,g}]^{n+\frac{1}{2}}.$$

Remark.

If we use an arithmetic mean instead of a geometric mean for the nonlinear term in (6), we end up with a nonlinear term $(u^{n+1})^2$. This term can be linearized as u^-u^{n+1} in a Picard iteration approach and in particular as $u^n u^{n+1}$ in a Picard1 iteration approach. The latter gives a scheme almost identical to the one arising from a geometric mean (the difference in u^{n+1} being $\frac{1}{4}\Delta t u^n (u^{n+1} - u^n) \approx \frac{1}{4}\Delta t^2 u' u$, i.e., a difference of $\mathcal{O}(\Delta t^2)$).

1.8 Newton’s method

The Backward Euler scheme (2) for the logistic equation leads to a nonlinear algebraic equation (3). Now we write any nonlinear algebraic equation in the general and compact form

$$F(u) = 0.$$

Newton’s method linearizes this equation by approximating $F(u)$ with its Taylor series expansion around a computed value u^- and keeping only the linear part:

$$\begin{aligned} F(u) &= F(u^-) + F'(u^-)(u - u^-) + \frac{1}{2}F''(u^-)(u - u^-)^2 + \dots \\ &\approx F(u^-) + F'(u^-)(u - u^-) = \hat{F}(u). \end{aligned}$$

The linear equation $\hat{F}(u) = 0$ has the solution

$$u = u^- - \frac{F(u^-)}{F'(u^-)}.$$

Expressed with an iteration index in the unknown, Newton's method takes on the more familiar mathematical form

$$u^{k+1} = u^k - \frac{F(u^k)}{F'(u^k)}, \quad k = 0, 1, \dots$$

It can be shown that the error in iteration $k + 1$ of Newton's method is the square of the error in iteration k , a result referred to as *quadratic convergence*. This means that for small errors the method converges very fast, and in particular much faster than Picard iteration and other iteration methods. (The proof of this result is found in most textbooks on numerical analysis.) However, the quadratic convergence appears only if u^k is sufficiently close to the solution. Further away from the solution the method can easily converge very slowly or diverge. The reader is encouraged to do Exercise 3 to get a better understanding for the behavior of the method.

Application of Newton's method to the logistic equation discretized by the Backward Euler method is straightforward as we have

$$F(u) = au^2 + bu + c, \quad a = \Delta t, \quad b = 1 - \Delta t, \quad c = -u^{(1)},$$

and then

$$F'(u) = 2au + b.$$

The iteration method becomes

$$u = u^- - \frac{a(u^-)^2 + bu^- + c}{2au^- + b}, \quad u^- \leftarrow u. \quad (7)$$

At each time level, we start the iteration by setting $u^- = u^{(1)}$. Stopping criteria as listed for the Picard iteration can be used also for Newton's method.

An alternative mathematical form, where we write out a , b , and c , and use a time level counter n and an iteration counter k , takes the form

$$u^{n,k+1} = u^{n,k} - \frac{\Delta t(u^{n,k})^2 + (1 - \Delta t)u^{n,k} - u^{n-1}}{2\Delta t u^{n,k} + 1 - \Delta t}, \quad u^{n,0} = u^{n-1}, \quad k = 0, 1, \dots \quad (8)$$

A program implementation is much closer to (7) than to (8), but the latter is better aligned with the established mathematical notation used in the literature.

1.9 Relaxation

One iteration in Newton's method or Picard iteration consists of solving a linear problem $\hat{F}(u) = 0$. Sometimes convergence problems arise because the new solution u of $\hat{F}(u) = 0$ is "too far away" from the previously computed solution u^- . A remedy is to introduce a relaxation, meaning that we first solve $\hat{F}(u^*) = 0$ for a suggested value u^* and then we take u as a weighted mean of what we had, u^- , and what our linearized equation $\hat{F} = 0$ suggests, u^* :

$$u = \omega u^* + (1 - \omega)u^-.$$

The parameter ω is known as a *relaxation parameter*, and a choice $\omega < 1$ may prevent divergent iterations.

Relaxation in Newton's method can be directly incorporated in the basic iteration formula:

$$u = u^- - \omega \frac{F(u^-)}{F'(u^-)}. \quad (9)$$

1.10 Implementation and experiments

The program `logistic.py`¹ contains implementations of all the methods described above. Below is an extract of the file showing how the Picard and Newton methods are implemented for a Backward Euler discretization of the logistic equation.

```
def BE_logistic(u0, dt, Nt, choice='Picard',
               eps_r=1E-3, omega=1, max_iter=1000):
    if choice == 'Picard':
        choice = 'Picard'
        max_iter = 1

    u = np.zeros(Nt+1)
    iterations = []
    u[0] = u0
    for n in range(1, Nt+1):
        a = dt
        b = 1 - dt
        c = -u[n-1]

        if choice == 'Picard':
            def F(u):
                return a*u**2 + b*u + c

            u_ = u[n-1]
            k = 0
            while abs(F(u_)) > eps_r and k < max_iter:
                u_ = omega*(-c/(a*u_ + b)) + (1-omega)*u_
                k += 1
            u[n] = u_
            iterations.append(k)

        elif choice == 'Newton':
            def F(u):
                return a*u**2 + b*u + c

            def dF(u):
                return 2*a*u + b

            u_ = u[n-1]
            k = 0
            while abs(F(u_)) > eps_r and k < max_iter:
                u_ = u_ - omega*F(u_)/dF(u_)
                k += 1
            u[n] = u_
            iterations.append(k)

    return u, iterations
```

The Crank-Nicolson method utilizing a linearization based on the geometric mean gives a simpler algorithm:

```
def CN_logistic(u0, dt, Nt):
    u = np.zeros(Nt+1)
    u[0] = u0
```

¹<http://tinyurl.com/nm5587k/nonlin/logistic.py>

```

for n in range(0, Nt):
    u[n+1] = (1 + 0.5*dt)/(1 + dt*u[n] - 0.5*dt)*u[n]
return u

```

We may run experiments with the model problem (1) and the different strategies for dealing with nonlinearities as described above. For a quite coarse time resolution, $\Delta t = 0.9$, use of a tolerance $\epsilon_r = 0.1$ in the stopping criterion introduces an iteration error, especially in the Picard iterations, that is visibly much larger than the time discretization error due to a large Δt . This is illustrated by comparing the upper two plots in Figure 1. The one to the right has a stricter tolerance $\epsilon = 10^{-3}$, which leads to all the curves corresponding to Picard and Newton iteration to be on top of each other (and no changes can be visually observed by reducing ϵ_r further). The reason why Newton's method does much better than Picard iteration in the upper left plot is that Newton's method with one step comes far below the $\epsilon_r = 10^{-1}$ tolerance, while the Picard iteration needs on average 7 iterations to bring the residual down to $\epsilon_r = 10^{-1}$, which gives insufficient accuracy in the solution of the nonlinear equation. It is obvious that the Picard1 method gives significant errors in addition to the time discretization unless the time step is as small as in the lower right plot.

The *BE exact* curve corresponds to using the exact solution of the quadratic equation at each time level, so this curve is only affected by the Backward Euler time discretization. The *CN gm* curve corresponds to the theoretically more accurate Crank-Nicolson discretization, combined with a geometric mean for linearization. This curve appears as more accurate, especially if we take the plot in the lower right with a small Δt and an appropriately small ϵ_r value as the exact curve.

When it comes to the need for iterations, Figure 2 displays the number of iterations required at each time level for Newton's method and Picard iteration. The smaller Δt is, the better starting value we have for the iteration, and the faster the convergence is. With $\Delta t = 0.9$ Picard iteration requires on average 32 iterations per time step, but this number is dramatically reduced as Δt is reduced.

However, introducing relaxation and a parameter $\omega = 0.8$ immediately reduces the average of 32 to 7, indicating that for the large $\Delta t = 0.9$, Picard iteration takes too long steps. An approximately optimal value for ω in this case is 0.5, which results in an average of only 2 iterations! Even more dramatic impact of ω appears when $\Delta t = 1$: Picard iteration does not converge in 1000 iterations, but $\omega = 0.5$ again brings the average number of iterations down to 2.

Remark. The simple Crank-Nicolson method with a geometric mean for the quadratic nonlinearity gives visually more accurate solutions than the Backward Euler discretization. Even with a tolerance of $\epsilon_r = 10^{-3}$, all the methods for treating the nonlinearities in the Backward Euler discretization give graphs that cannot be distinguished. So for accuracy in this problem, the time discretization is much more crucial than ϵ_r . Ideally, one should estimate the error in the time discretization, as the solution progresses, and set ϵ_r accordingly.

1.11 Generalization to a general nonlinear ODE

Let us see how the various methods in the previous sections can be applied to the more generic model

$$u' = f(u, t), \quad (10)$$

where f is a nonlinear function of u .

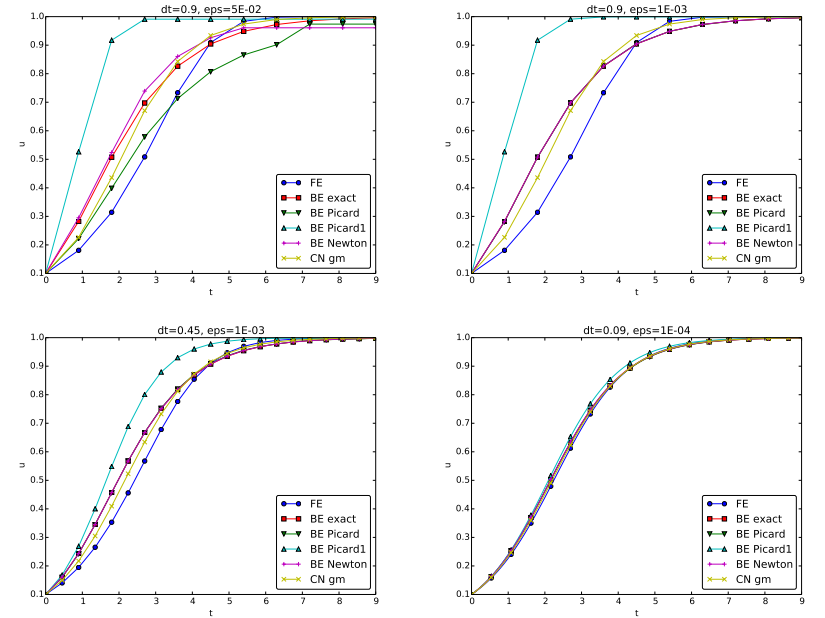


Figure 1: Impact of solution strategy and time step length on the solution.

Explicit time discretization. Explicit ODE methods like the Forward Euler scheme, Runge-Kutta methods, Adams-Bashforth methods all evaluate f at time levels where u is already computed, so nonlinearities in f do not pose any difficulties.

Backward Euler discretization. Approximating u' by a backward difference leads to a Backward Euler scheme, which can be written as

$$F(u^n) = u^n - \Delta t f(u^n, t_n) - u^{n-1} = 0,$$

or alternatively

$$F(u) = u - \Delta t f(u, t_n) - u^{(1)} = 0.$$

A simple Picard iteration, not knowing anything about the nonlinear structure of f , must approximate $f(u, t_n)$ by $f(u^-, t_n)$:

$$\hat{F}(u) = u - \Delta t f(u^-, t_n) - u^{(1)}.$$

The iteration starts with $u^- = u^{(1)}$ and proceeds with repeating

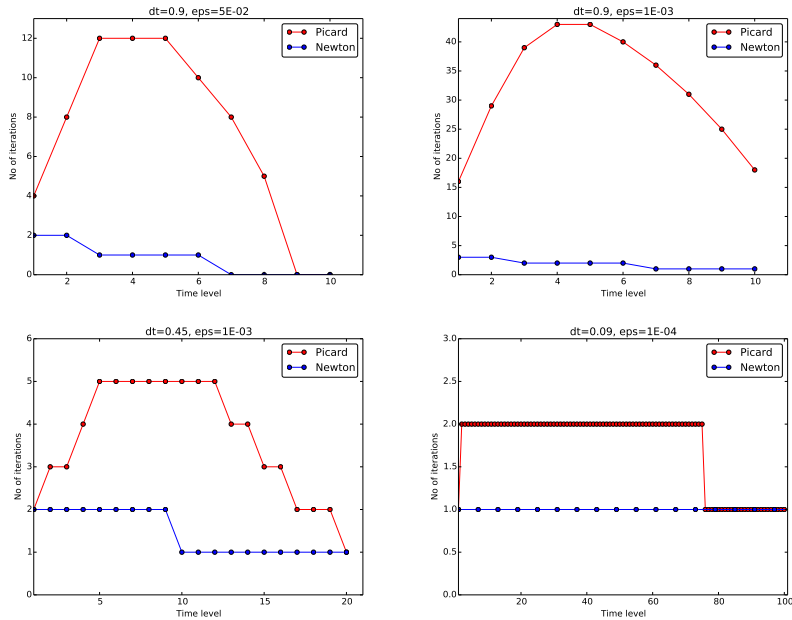


Figure 2: Comparison of the number of iterations at various time levels for Picard and Newton iteration.

$$u^* = \Delta t f(u^-, t_n) + u^{(1)}, \quad u = \omega u^* + (1 - \omega)u^-, \quad u^- \leftarrow u,$$

until a stopping criterion is fulfilled.

Explicit vs implicit treatment of nonlinear terms.

Evaluating f for a known u^- is referred to as *explicit* treatment of f , while if $f(u, t)$ has some structure, say $f(u, t) = u^3$, parts of f can involve the known u , as in the manual linearization like $(u^-)^2 u$, and then the treatment of f is “more implicit” and “less explicit”. This terminology is inspired by time discretization of $u' = f(u, t)$, where evaluating f for known u values gives explicit schemes, while treating f or parts of f implicitly, makes f contribute to the unknown terms in the equation at the new time level.

Explicit treatment of f usually means stricter conditions on Δt to achieve stability of time discretization schemes. The same applies to iteration techniques for nonlinear algebraic equations: the “less” we linearize f (i.e., the more we keep of u in the original formula), the faster the convergence may be.

We may say that $f(u, t) = u^3$ is treated explicitly if we evaluate f as $(u^-)^3$, partially implicit if we linearize as $(u^-)^2 u$ and fully implicit if we represent f by u^3 . (Of course, the fully implicit representation will require further linearization, but with $f(u, t) = u^2$ a fully implicit treatment is possible if the resulting quadratic equation is solved with a formula.)

For the ODE $u' = -u^3$ with $f(u, t) = -u^3$ and coarse time resolution $\Delta t = 0.4$, Picard iteration with $(u^-)^2 u$ requires 8 iterations with $\epsilon_r = 10^{-3}$ for the first time step, while $(u^-)^3$ leads to 22 iterations. After about 10 time steps both approaches are down to about 2 iterations per time step, but this example shows a potential of treating f more implicitly.

A trick to treat f implicitly in Picard iteration is to evaluate it as $f(u^-, t)u/u^-$. For a polynomial f , $f(u, t) = u^m$, this corresponds to $(u^-)^{m-1}u$. Sometimes this more implicit treatment has no effect, as with $f(u, t) = \exp(-u)$ and $f(u, t) = \ln(1 + u)$, but with $f(u, t) = \sin(2(u + 1))$, the $f(u^-, t)u/u^-$ trick leads to 7, 9, and 11 iterations during the first three steps, while $f(u^-, t)$ demands 17, 21, and 20 iterations. (Experiments can be done with the code `ODE_Picard_tricks.py`.)

http://tinyurl.com/nm5587k/nonlin/ODE_Picard_tricks.py

Newton’s method applied to a Backward Euler discretization of $u' = f(u, t)$ requires the computation of the derivative

$$F'(u) = 1 - \Delta t \frac{\partial f}{\partial u}(u, t_n).$$

Starting with the solution at the previous time level, $u^- = u^{(1)}$, we can just use the standard formula

$$u = u^- - \omega \frac{F(u^-)}{F'(u^-)} = u^- - \omega \frac{u^- - \Delta t f(u^-, t_n) - u^{(1)}}{1 - \Delta t \frac{\partial f}{\partial u}(u^-, t_n)}. \quad (11)$$

Crank-Nicolson discretization. The standard Crank-Nicolson scheme with arithmetic mean approximation of f takes the form

$$\frac{u^{n+1} - u^n}{\Delta t} = \frac{1}{2}(f(u^{n+1}, t_{n+1}) + f(u^n, t_n)).$$

We can write the scheme as a nonlinear algebraic equation

$$F(u) = u - u^{(1)} - \Delta t \frac{1}{2} f(u, t_{n+1}) - \Delta t \frac{1}{2} f(u^{(1)}, t_n) = 0. \quad (12)$$

A Picard iteration scheme must in general employ the linearization

$$\hat{F}(u) = u - u^{(1)} - \Delta t \frac{1}{2} f(u^-, t_{n+1}) - \Delta t \frac{1}{2} f(u^{(1)}, t_n),$$

while Newton’s method can apply the general formula (11) with $F(u)$ given in (12) and

$$F'(u) = 1 - \frac{1}{2} \Delta t \frac{\partial f}{\partial u}(u, t_{n+1}).$$

1.12 Systems of ODEs

We may write a system of ODEs

$$\begin{aligned}\frac{d}{dt}u_0(t) &= f_0(u_0(t), u_1(t), \dots, u_N(t), t), \\ \frac{d}{dt}u_1(t) &= f_1(u_0(t), u_1(t), \dots, u_N(t), t), \\ &\vdots \\ \frac{d}{dt}u_N(t) &= f_N(u_0(t), u_1(t), \dots, u_N(t), t),\end{aligned}$$

as

$$u' = f(u, t), \quad u(0) = U_0, \quad (13)$$

if we interpret u as a vector $u = (u_0(t), u_1(t), \dots, u_N(t))$ and f as a vector function with components $(f_0(u, t), f_1(u, t), \dots, f_N(u, t))$.

Most solution methods for scalar ODEs, including the Forward and Backward Euler schemes and the Crank-Nicolson method, generalize in a straightforward way to systems of ODEs simply by using vector arithmetics instead of scalar arithmetics, which corresponds to applying the scalar scheme to each component of the system. For example, here is a backward difference scheme applied to each component,

$$\begin{aligned}\frac{u_0^n - u_0^{n-1}}{\Delta t} &= f_0(u^n, t_n), \\ \frac{u_1^n - u_1^{n-1}}{\Delta t} &= f_1(u^n, t_n), \\ &\vdots \\ \frac{u_N^n - u_N^{n-1}}{\Delta t} &= f_N(u^n, t_n),\end{aligned}$$

which can be written more compactly in vector form as

$$\frac{u^n - u^{n-1}}{\Delta t} = f(u^n, t_n).$$

This is a *system of algebraic equations*,

$$u^n - \Delta t f(u^n, t_n) - u^{n-1} = 0,$$

or written out

$$\begin{aligned}u_0^n - \Delta t f_0(u^n, t_n) - u_0^{n-1} &= 0, \\ &\vdots \\ u_N^n - \Delta t f_N(u^n, t_n) - u_N^{n-1} &= 0.\end{aligned}$$

Example. We shall address the 2×2 ODE system for oscillations of a pendulum subject to gravity and air drag. The system can be written as

$$\dot{\omega} = -\sin \theta - \beta \omega |\omega|, \quad (14)$$

$$\dot{\theta} = \omega, \quad (15)$$

where β is a dimensionless parameter (this is the scaled, dimensionless version of the original, physical model). The unknown components of the system are the angle $\theta(t)$ and the angular velocity $\omega(t)$. We introduce $u_0 = \omega$ and $u_1 = \theta$, which leads to

$$\begin{aligned}u'_0 &= f_0(u, t) = -\sin u_1 - \beta u_0 |u_0|, \\ u'_1 &= f_1(u, t) = u_0.\end{aligned}$$

A Crank-Nicolson scheme reads

$$\begin{aligned}\frac{u_0^{n+1} - u_0^n}{\Delta t} &= -\sin u_1^{n+\frac{1}{2}} - \beta u_0^{n+\frac{1}{2}} |u_0^{n+\frac{1}{2}}| \\ &\approx -\sin \left(\frac{1}{2}(u_1^{n+1} + u_1^n) \right) - \beta \frac{1}{4}(u_0^{n+1} + u_0^n) |u_0^{n+1} + u_0^n|, \quad (16)\end{aligned}$$

$$\frac{u_1^{n+1} - u_1^n}{\Delta t} = u_0^{n+\frac{1}{2}} \approx \frac{1}{2}(u_0^{n+1} + u_0^n). \quad (17)$$

This is a *coupled system* of two nonlinear algebraic equations in two unknowns u_0^{n+1} and u_1^{n+1} .

Using the notation u_0 and u_1 for the unknowns u_0^{n+1} and u_1^{n+1} in this system, writing $u_0^{(1)}$ and $u_1^{(1)}$ for the previous values u_0^n and u_1^n , multiplying by Δt and moving the terms to the left-hand sides, gives

$$u_0 - u_0^{(1)} + \Delta t \sin \left(\frac{1}{2}(u_1 + u_1^{(1)}) \right) + \frac{1}{4} \Delta t \beta (u_0 + u_0^{(1)}) |u_0 + u_0^{(1)}| = 0, \quad (18)$$

$$u_1 - u_1^{(1)} - \frac{1}{2} \Delta t (u_0 + u_0^{(1)}) = 0. \quad (19)$$

Obviously, we have a need for solving systems of nonlinear algebraic equations, which is the topic of the next section.

2 Systems of nonlinear algebraic equations

Implicit time discretization methods for a system of ODEs, or a PDE, lead to *systems* of nonlinear algebraic equations, written compactly as

$$F(u) = 0,$$

where u is a vector of unknowns $u = (u_0, \dots, u_N)$, and F is a vector function: $F = (F_0, \dots, F_N)$. The system at the end of Section 1.12 fits this notation with $N = 2$, $F_0(u)$ given by the left-hand side of (18), while $F_1(u)$ is the left-hand side of (19).

Sometimes the equation system has a special structure because of the underlying problem, e.g.,

$$A(u)u = b(u),$$

with $A(u)$ as an $(N+1) \times (N+1)$ matrix function of u and b as a vector function: $b = (b_0, \dots, b_N)$.

We shall next explain how Picard iteration and Newton's method can be applied to systems like $F(u) = 0$ and $A(u)u = b(u)$. The exposition has a focus on ideas and practical computations. More theoretical considerations, including quite general results on convergence properties of these methods, can be found in Kelley [1].

2.1 Picard iteration

We cannot apply Picard iteration to nonlinear equations unless there is some special structure. For the commonly arising case $A(u)u = b(u)$ we can linearize the product $A(u)u$ to $A(u^-)u$ and $b(u)$ as $b(u^-)$. That is, we use the most previously computed approximation in A and b to arrive at a *linear system* for u :

$$A(u^-)u = b(u^-).$$

A relaxed iteration takes the form

$$A(u^-)u^* = b(u^-), \quad u = \omega u^* + (1 - \omega)u^-.$$

In other words, we solve a system of nonlinear algebraic equations as a sequence of linear systems.

Algorithm for relaxed Picard iteration.

Given $A(u)u = b(u)$ and an initial guess u^- , iterate until convergence:

1. solve $A(u^-)u^* = b(u^-)$ with respect to u^*
2. $u = \omega u^* + (1 - \omega)u^-$
3. $u^- \leftarrow u$

“Until convergence” means that the iteration is stopped when the change in the unknown, $\|u - u^-\|$, or the residual $\|A(u^-)u - b(u^-)\|$, is sufficiently small, see Section 2.3 for more details.

2.2 Newton's method

The natural starting point for Newton's method is the general nonlinear vector equation $F(u) = 0$. As for a scalar equation, the idea is to approximate F around a known value u^- by a linear function \hat{F} , calculated from the first two terms of a Taylor expansion of F . In the multi-variate case these two terms become

$$F(u^-) + J(u^-) \cdot (u - u^-),$$

where J is the *Jacobian* of F , defined by

$$J_{i,j} = \frac{\partial F_i}{\partial u_j}.$$

So, the original nonlinear system is approximated by

$$\hat{F}(u) = F(u^-) + J(u^-) \cdot (u - u^-) = 0,$$

which is linear in u and can be solved in a two-step procedure: first solve $J\delta u = -F(u^-)$ with respect to the vector δu and then update $u = u^- + \delta u$. A relaxation parameter can easily be incorporated:

$$u = \omega(u^- + \delta u) + (1 - \omega)u^- = u^- + \omega\delta u.$$

Algorithm for Newton's method.

Given $F(u) = 0$ and an initial guess u^- , iterate until convergence:

1. solve $J\delta u = -F(u^-)$ with respect to δu
2. $u = u^- + \omega\delta u$
3. $u^- \leftarrow u$

For the special system with structure $A(u)u = b(u)$,

$$F_i = \sum_k A_{i,k}(u)u_k - b_i(u),$$

one gets

$$J_{i,j} = A_{i,j} + \sum_k \frac{\partial A_{i,k}}{\partial u_j} u_k - \frac{\partial b_i}{\partial u_j}. \quad (20)$$

We realize that the Jacobian needed in Newton's method consists of $A(u^-)$ as in the Picard iteration plus two additional terms arising from the differentiation. Using the notation $A'(u)$ for $\partial A/\partial u$ (a quantity with three indices: $\partial A_{i,k}/\partial u_j$), and $b'(u)$ for $\partial b/\partial u$ (a quantity with two indices: $\partial b_i/\partial u_j$), we can write the linear system to be solved as

$$(A + A'u - b')\delta u = -Au + b,$$

or

$$(A(u^-) + A'(u^-)u^- - b'(u^-))\delta u = -A(u^-)u^- + b(u^-).$$

Rearranging the terms demonstrates the difference from the system solved in each Picard iteration:

$$\underbrace{A(u^-)(u^- + \delta u) - b(u^-)}_{\text{Picard system}} + \gamma(A'(u^-)u^- - b'(u^-))\delta u = 0.$$

Here we have inserted a parameter γ such that $\gamma = 0$ gives the Picard system and $\gamma = 1$ gives the Newton system. Such a parameter can be handy in software to easily switch between the methods.

Combined algorithm for Picard and Newton iteration.

Given $A(u)$, $b(u)$, and an initial guess u^- , iterate until convergence:

1. solve $(A(u^-) + \gamma(A'(u^-)u^- - b'(u^-)))\delta u = -A(u^-)u^- + b(u^-)$ with respect to δu
2. $u = u^- + \omega\delta u$
3. $u^- \leftarrow u$

$\gamma = 1$ gives a Newton method while $\gamma = 0$ corresponds to Picard iteration.

2.3 Stopping criteria

Let $\|\cdot\|$ be the standard Euclidean vector norm. Four termination criteria are much in use:

- Absolute change in solution: $\|u - u^-\| \leq \epsilon_u$
- Relative change in solution: $\|u - u^-\| \leq \epsilon_u \|u_0\|$, where u_0 denotes the start value of u^- in the iteration
- Absolute residual: $\|F(u)\| \leq \epsilon_r$
- Relative residual: $\|F(u)\| \leq \epsilon_r \|F(u_0)\|$

To prevent divergent iterations to run forever, one terminates the iterations when the current number of iterations k exceeds a maximum value k_{\max} .

The relative criteria are most used since they are not sensitive to the characteristic size of u . Nevertheless, the relative criteria can be misleading when the initial start value for the iteration is very close to the solution, since an unnecessary reduction in the error measure is enforced. In such cases the absolute criteria work better. It is common to combine the absolute and relative measures of the size of the residual, as in

$$\|F(u)\| \leq \epsilon_{rr} \|F(u_0)\| + \epsilon_{ra}, \quad (21)$$

where ϵ_{rr} is the tolerance in the relative criterion and ϵ_{ra} is the tolerance in the absolute criterion. With a very good initial guess for the iteration (typically the solution of a differential equation at the previous time level), the term $\|F(u_0)\|$ is small and ϵ_{ra} is the dominating tolerance. Otherwise, $\epsilon_{rr} \|F(u_0)\|$ and the relative criterion dominates.

With the change in solution as criterion we can formulate a combined absolute and relative measure of the change in the solution:

$$\|\delta u\| \leq \epsilon_{ur} \|u_0\| + \epsilon_{ua}, \quad (22)$$

The ultimate termination criterion, combining the residual and the change in solution with a test on the maximum number of iterations, can be expressed as

$$\|F(u)\| \leq \epsilon_{rr} \|F(u_0)\| + \epsilon_{ra} \quad \text{or} \quad \|\delta u\| \leq \epsilon_{ur} \|u_0\| + \epsilon_{ua} \quad \text{or} \quad k > k_{\max}. \quad (23)$$

2.4 Example: A nonlinear ODE model from epidemiology

The simplest model of the spreading of a disease, such as a flu, takes the form of a 2×2 ODE system

$$S' = -\beta SI, \quad (24)$$

$$I' = \beta SI - \nu I, \quad (25)$$

where $S(t)$ is the number of people who can get ill (susceptibles) and $I(t)$ is the number of people who are ill (infected). The constants $\beta > 0$ and $\nu > 0$ must be given along with initial conditions $S(0)$ and $I(0)$.

Implicit time discretization. A Crank-Nicolson scheme leads to a 2×2 system of nonlinear algebraic equations in the unknowns S^{n+1} and I^{n+1} :

$$\frac{S^{n+1} - S^n}{\Delta t} = -\beta[S I]^{n+\frac{1}{2}} \approx -\frac{\beta}{2}(S^n I^n + S^{n+1} I^{n+1}), \quad (26)$$

$$\frac{I^{n+1} - I^n}{\Delta t} = \beta[S I]^{n+\frac{1}{2}} - \nu I^{n+\frac{1}{2}} \approx \frac{\beta}{2}(S^n I^n + S^{n+1} I^{n+1}) - \frac{\nu}{2}(I^n + I^{n+1}). \quad (27)$$

Introducing S for S^{n+1} , $S^{(1)}$ for S^n , I for I^{n+1} , $I^{(1)}$ for I^n , we can rewrite the system as

$$F_S(S, I) = S - S^{(1)} + \frac{1}{2}\Delta t\beta(S^{(1)}I^{(1)} + SI) = 0, \quad (28)$$

$$F_I(S, I) = I - I^{(1)} - \frac{1}{2}\Delta t\beta(S^{(1)}I^{(1)} + SI) + \frac{1}{2}\Delta t\nu(I^{(1)} + I) = 0. \quad (29)$$

A Picard iteration. We assume that we have approximations S^- and I^- to S and I . A way of linearizing the only nonlinear term SI is to write I^-S in the $F_S = 0$ equation and S^-I in the $F_I = 0$ equation, which also *decouples* the equations. Solving the resulting linear equations with respect to the unknowns S and I gives

$$S = \frac{S^{(1)} - \frac{1}{2}\Delta t\beta S^{(1)}I^{(1)}}{1 + \frac{1}{2}\Delta t\beta I^-},$$

$$I = \frac{I^{(1)} + \frac{1}{2}\Delta t\beta S^{(1)}I^{(1)} - \frac{1}{2}\Delta t\nu I^{(1)}}{1 - \frac{1}{2}\Delta t\beta S^- + \frac{1}{2}\Delta t\nu}.$$

Before a new iteration, we must update $S^- \leftarrow S$ and $I^- \leftarrow I$.

Newton's method. The nonlinear system (28)-(29) can be written as $F(u) = 0$ with $F = (F_S, F_I)$ and $u = (S, I)$. The Jacobian becomes

$$J = \begin{pmatrix} \frac{\partial}{\partial S} F_S & \frac{\partial}{\partial I} F_S \\ \frac{\partial}{\partial S} F_I & \frac{\partial}{\partial I} F_I \end{pmatrix} = \begin{pmatrix} 1 + \frac{1}{2}\Delta t\beta I & -\frac{1}{2}\Delta t\beta S \\ -\frac{1}{2}\Delta t\beta I & 1 - \frac{1}{2}\Delta t\beta S + \frac{1}{2}\Delta t\nu \end{pmatrix}.$$

The Newton system $J(u^-)\delta u = -F(u^-)$ to be solved in each iteration is then

$$\begin{pmatrix} 1 + \frac{1}{2}\Delta t\beta I^- & -\frac{1}{2}\Delta t\beta S^- \\ -\frac{1}{2}\Delta t\beta I^- & 1 - \frac{1}{2}\Delta t\beta S^- + \frac{1}{2}\Delta t\nu \end{pmatrix} \begin{pmatrix} \delta S \\ \delta I \end{pmatrix} = \\ - \begin{pmatrix} S^- - S^{(1)} + \frac{1}{2}\Delta t\beta(S^{(1)}I^{(1)} + S^-I^-) \\ I^- - I^{(1)} - \frac{1}{2}\Delta t\beta(S^{(1)}I^{(1)} + S^-I^-) + \frac{1}{2}\Delta t\nu(I^{(1)} + I^-) \end{pmatrix}$$

Remark. For this particular system of ODEs, explicit time integration methods work very well. Even a Forward Euler scheme is fine, but the 4-th order Runge-Kutta method is an excellent balance between high accuracy, high efficiency, and simplicity.

3 Linearization at the differential equation level

The attention is now turned to nonlinear partial differential equations (PDEs) and application of the techniques explained above for ODEs. The model problem is a nonlinear diffusion equation for $u(\mathbf{x}, t)$:

$$\frac{\partial u}{\partial t} = \nabla \cdot (\alpha(u)\nabla u) + f(u), \quad \mathbf{x} \in \Omega, \quad t \in (0, T], \quad (30)$$

$$-\alpha(u)\frac{\partial u}{\partial n} = g, \quad \mathbf{x} \in \partial\Omega_N, \quad t \in (0, T], \quad (31)$$

$$u = u_0, \quad \mathbf{x} \in \partial\Omega_D, \quad t \in (0, T]. \quad (32)$$

In the present section, our aim is to discretize this problem in time and then present techniques for linearizing the time-discrete PDE problem “at the PDE level” such that we transform the nonlinear stationary PDE problem at each time level into a sequence of linear PDE problems, which can be solved using any method for linear PDEs. This strategy avoids the solution of systems of nonlinear algebraic equations. In Section 4 we shall take the opposite (and more common) approach: discretize the nonlinear problem in time and space first, and then solve the resulting nonlinear algebraic equations at each time level by the methods of Section 2. Very often, the two approaches are mathematically identical, so there is no preference from a computational efficiency point of view. The details of the ideas sketched above will hopefully become clear through the forthcoming examples.

3.1 Explicit time integration

The nonlinearities in the PDE are trivial to deal with if we choose an explicit time integration method for (30), such as the Forward Euler method:

$$[D_t^+ u = \nabla \cdot (\alpha(u)\nabla u) + f(u)]^n,$$

or written out,

$$\frac{u^{n+1} - u^n}{\Delta t} = \nabla \cdot (\alpha(u^n)\nabla u^n) + f(u^n),$$

which is a linear equation in the unknown u^{n+1} with solution

$$u^{n+1} = u^n + \Delta t \nabla \cdot (\alpha(u^n)\nabla u^n) + \Delta t f(u^n).$$

The disadvantage with this discretization is the strict stability criterion $\Delta t \leq h^2/(6 \max \alpha)$ for the case $f = 0$ and a standard 2nd-order finite difference discretization in 3D space with mesh cell sizes $h = \Delta x = \Delta y = \Delta z$.

3.2 Backward Euler scheme and Picard iteration

A Backward Euler scheme for (30) reads

$$[D_t^- u = \nabla \cdot (\alpha(u)\nabla u) + f(u)]^n.$$

Written out,

$$\frac{u^n - u^{n-1}}{\Delta t} = \nabla \cdot (\alpha(u^n)\nabla u^n) + f(u^n). \quad (33)$$

This is a nonlinear PDE for the unknown function $u^n(\mathbf{x})$. Such a PDE can be viewed as a time-independent PDE where $u^{n-1}(\mathbf{x})$ is a known function.

We introduce a Picard iteration with k as iteration counter. A typical linearization of the $\nabla \cdot (\alpha(u^n)\nabla u^n)$ term in iteration $k + 1$ is to use the previously computed $u^{n,k}$ approximation in the diffusion coefficient: $\alpha(u^{n,k})$. The nonlinear source term is treated similarly: $f(u^{n,k})$. The unknown function $u^{n,k+1}$ then fulfills the linear PDE

$$\frac{u^{n,k+1} - u^{n-1}}{\Delta t} = \nabla \cdot (\alpha(u^{n,k})\nabla u^{n,k+1}) + f(u^{n,k}). \quad (34)$$

The initial guess for the Picard iteration at this time level can be taken as the solution at the previous time level: $u^{n,0} = u^{n-1}$.

We can alternatively apply the implementation-friendly notation where u corresponds to the unknown we want to solve for, i.e., $u^{n,k+1}$ above, and u^- is the most recently computed value, $u^{n,k}$ above. Moreover, $u^{(1)}$ denotes the unknown function at the previous time level, u^{n-1} above. The PDE to be solved in a Picard iteration then looks like

$$\frac{u - u^{(1)}}{\Delta t} = \nabla \cdot (\alpha(u^-)\nabla u) + f(u^-). \quad (35)$$

At the beginning of the iteration we start with the value from the previous time level: $u^- = u^{(1)}$, and after each iteration, u^- is updated to u .

Remark on notation.

The previous derivations of the numerical scheme for time discretizations of PDEs have, strictly speaking, a somewhat sloppy notation, but it is much used and convenient to read. A more precise notation must distinguish clearly between the exact solution of the PDE problem, here denoted $u_e(\mathbf{x}, t)$, and the exact solution of the spatial problem, arising after time discretization at each time level, where (33) is an example. The latter is here represented as $u^n(\mathbf{x})$ and is an approximation to $u_e(\mathbf{x}, t_n)$. Then we have another approximation $u^{n,k}(\mathbf{x})$ to $u^n(\mathbf{x})$ when solving the nonlinear PDE problem for u^n by iteration methods, as in (34).

In our notation, u is a synonym for $u^{n,k+1}$ and $u^{(1)}$ is a synonym for u^{n-1} , inspired by what are natural variable names in a code. We will usually state the PDE problem in terms of u and quickly redefine the symbol u to mean the numerical approximation, while u_e is not explicitly introduced unless we need to talk about the exact solution and the approximate solution at the same time.

3.3 Backward Euler scheme and Newton's method

At time level n , we have to solve the stationary PDE (33). In the previous section, we saw how this can be done with Picard iterations. Another alternative is to apply the idea of Newton's method in a clever way. Normally, Newton's method is defined for systems of *algebraic equations*, but the idea of the method can be applied at the PDE level too.

Linearization via Taylor expansions. Let $u^{n,k}$ be the most recently computed approximation to the unknown u^n . We seek a better approximation on the form

$$u^n = u^{n,k} + \delta u. \quad (36)$$

The idea is to insert (36) in (33), Taylor expand the nonlinearities and keep only the terms that are linear in δu (which makes (36) an approximation for u^n). Then we can solve a linear PDE for the correction δu and use (36) to find a new approximation

$$u^{n,k+1} = u^{n,k} + \delta u$$

to u^n . Repeating this procedure gives a sequence $u^{n,k+1}$, $k = 0, 1, \dots$ that hopefully converges to the goal u^n .

Let us carry out all the mathematical details for the nonlinear diffusion PDE discretized by the Backward Euler method. Inserting (36) in (33) gives

$$\frac{u^{n,k} + \delta u - u^{n-1}}{\Delta t} = \nabla \cdot (\alpha(u^{n,k} + \delta u) \nabla (u^{n,k} + \delta u)) + f(u^{n,k} + \delta u). \quad (37)$$

We can Taylor expand $\alpha(u^{n,k} + \delta u)$ and $f(u^{n,k} + \delta u)$:

$$\begin{aligned} \alpha(u^{n,k} + \delta u) &= \alpha(u^{n,k}) + \frac{d\alpha}{du}(u^{n,k})\delta u + \mathcal{O}(\delta u^2) \approx \alpha(u^{n,k}) + \alpha'(u^{n,k})\delta u, \\ f(u^{n,k} + \delta u) &= f(u^{n,k}) + \frac{df}{du}(u^{n,k})\delta u + \mathcal{O}(\delta u^2) \approx f(u^{n,k}) + f'(u^{n,k})\delta u. \end{aligned}$$

Inserting the linear approximations of α and f in (37) results in

$$\begin{aligned} \frac{u^{n,k} + \delta u - u^{n-1}}{\Delta t} &= \nabla \cdot (\alpha(u^{n,k}) \nabla u^{n,k}) + f(u^{n,k}) + \\ &\quad \nabla \cdot (\alpha(u^{n,k}) \nabla \delta u) + \nabla \cdot (\alpha'(u^{n,k}) \delta u \nabla u^{n,k}) + \\ &\quad \nabla \cdot (\alpha'(u^{n,k}) \delta u \nabla \delta u) + f'(u^{n,k}) \delta u. \end{aligned} \quad (38)$$

The term $\alpha'(u^{n,k})\delta u \nabla \delta u$ is of order δu^2 and therefore omitted since we expect the correction δu to be small ($\delta u \gg \delta u^2$). Reorganizing the equation gives a PDE for δu that we can write in short form as

$$\delta F(\delta u; u^{n,k}) = -F(u^{n,k}),$$

where

$$\begin{aligned} F(u^{n,k}) &= \frac{u^{n,k} - u^{n-1}}{\Delta t} - \nabla \cdot (\alpha(u^{n,k}) \nabla u^{n,k}) - f(u^{n,k}), \\ \delta F(\delta u; u^{n,k}) &= \frac{1}{\Delta t} \delta u - \nabla \cdot (\alpha(u^{n,k}) \nabla \delta u) - \\ &\quad \nabla \cdot (\alpha'(u^{n,k}) \delta u \nabla u^{n,k}) - f'(u^{n,k}) \delta u. \end{aligned} \quad (39)$$

Note that δF is a linear function of δu , and F contains only terms that are known, such that the PDE for δu is indeed linear.

Observations.

The notational form $\delta F = -F$ resembles the Newton system $J\delta u = -F$ for systems of algebraic equations, with δF as $J\delta u$. The unknown vector in a linear system of algebraic equations enters the system as a linear operator in terms of a matrix-vector product ($J\delta u$), while at the PDE level we have a linear differential operator instead (δF).

Similarity with Picard iteration. We can rewrite the PDE for δu in a slightly different way too if we define $u^{n,k} + \delta u$ as $u^{n,k+1}$.

$$\begin{aligned} \frac{u^{n,k+1} - u^{n-1}}{\Delta t} &= \nabla \cdot (\alpha(u^{n,k}) \nabla u^{n,k+1}) + f(u^{n,k}) \\ &\quad + \nabla \cdot (\alpha'(u^{n,k}) \delta u \nabla u^{n,k}) + f'(u^{n,k}) \delta u. \end{aligned} \quad (41)$$

Note that the first line is the same PDE as arise in the Picard iteration, while the remaining terms arise from the differentiations that are an inherent ingredient in Newton's method.

Implementation. For coding we want to introduce u for u^n , u^- for $u^{n,k}$ and $u^{(1)}$ for u^{n-1} . The formulas for F and δF are then more clearly written as

$$F(u^-) = \frac{u^- - u^{(1)}}{\Delta t} - \nabla \cdot (\alpha(u^-) \nabla u^-) - f(u^-), \quad (42)$$

$$\begin{aligned} \delta F(\delta u; u^-) &= \frac{1}{\Delta t} \delta u - \nabla \cdot (\alpha(u^-) \nabla \delta u) - \\ &\quad \nabla \cdot (\alpha'(u^-) \delta u \nabla u^-) - f'(u^-) \delta u. \end{aligned} \quad (43)$$

The form that orders the PDE as the Picard iteration terms plus the Newton method's derivative terms becomes

$$\begin{aligned} \frac{u - u^{(1)}}{\Delta t} &= \nabla \cdot (\alpha(u^-) \nabla u) + f(u^-) + \\ &\quad \gamma (\nabla \cdot (\alpha'(u^-) (u - u^-) \nabla u^-) + f'(u^-) (u - u^-)). \end{aligned} \quad (44)$$

The Picard and full Newton versions correspond to $\gamma = 0$ and $\gamma = 1$, respectively.

Derivation with alternative notation. Some may prefer to derive the linearized PDE for δu using the more compact notation. We start with inserting $u^n = u^- + \delta u$ to get

$$\frac{u^- + \delta u - u^{n-1}}{\Delta t} = \nabla \cdot (\alpha(u^- + \delta u) \nabla (u^- + \delta u)) + f(u^- + \delta u).$$

Taylor expanding,

$$\begin{aligned} \alpha(u^- + \delta u) &\approx \alpha(u^-) + \alpha'(u^-) \delta u, \\ f(u^- + \delta u) &\approx f(u^-) + f'(u^-) \delta u, \end{aligned}$$

and inserting these expressions gives a less cluttered PDE for δu :

$$\begin{aligned} \frac{u^- + \delta u - u^{n-1}}{\Delta t} &= \nabla \cdot (\alpha(u^-) \nabla u^-) + f(u^-) + \\ &\quad \nabla \cdot (\alpha(u^-) \nabla \delta u) + \nabla \cdot (\alpha'(u^-) \delta u \nabla u^-) + \\ &\quad \nabla \cdot (\alpha'(u^-) \delta u \nabla \delta u) + f'(u^-) \delta u. \end{aligned}$$

3.4 Crank-Nicolson discretization

A Crank-Nicolson discretization of (30) applies a centered difference at $t_{n+\frac{1}{2}}$:

$$[D_t u = \nabla \cdot (\alpha(u) \nabla u) + f(u)]^{n+\frac{1}{2}}.$$

Since u is not known at $t_{n+\frac{1}{2}}$ we need to express the terms on the right-hand side via unknowns u^n and u^{n+1} . The standard technique is to apply an arithmetic average,

$$u^{n+\frac{1}{2}} \approx \frac{1}{2}(u^n + u^{n+1}).$$

However, with nonlinear terms we have many choices of formulating an arithmetic mean:

$$[f(u)]^{n+\frac{1}{2}} \approx f\left(\frac{1}{2}(u^n + u^{n+1})\right) = [f(\bar{u}^t)]^{n+\frac{1}{2}}, \quad (45)$$

$$[f(u)]^{n+\frac{1}{2}} \approx \frac{1}{2}(f(u^n) + f(u^{n+1})) = [\overline{f(u)^t}]^{n+\frac{1}{2}}, \quad (46)$$

$$[\alpha(u) \nabla u]^{n+\frac{1}{2}} \approx \alpha\left(\frac{1}{2}(u^n + u^{n+1})\right) \nabla \left(\frac{1}{2}(u^n + u^{n+1})\right) = [\alpha(\bar{u}^t) \nabla \bar{u}^t]^{n+\frac{1}{2}}, \quad (47)$$

$$[\alpha(u) \nabla u]^{n+\frac{1}{2}} \approx \frac{1}{2}(\alpha(u^n) + \alpha(u^{n+1})) \nabla \left(\frac{1}{2}(u^n + u^{n+1})\right) = [\overline{\alpha(u)^t} \nabla \bar{u}^t]^{n+\frac{1}{2}}, \quad (48)$$

$$[\alpha(u) \nabla u]^{n+\frac{1}{2}} \approx \frac{1}{2}(\alpha(u^n) \nabla u^n + \alpha(u^{n+1}) \nabla u^{n+1}) = [\overline{\alpha(u) \nabla u^t}]^{n+\frac{1}{2}}. \quad (49)$$

A big question is whether there are significant differences in accuracy between taking the products of arithmetic means or taking the arithmetic mean of products. Exercise 6 investigates this question, and the answer is that the approximation is $\mathcal{O}(\Delta t^2)$ in both cases.

4 Discretization of 1D stationary nonlinear differential equations

Section 3 presented methods for linearizing time-discrete PDEs directly prior to discretization in space. We can alternatively carry out the discretization in space of the time-discrete nonlinear PDE problem and get a system of nonlinear algebraic equations, which can be solved by Picard iteration or Newton's method as presented in Section 2. This latter approach will now be described in detail.

We shall work with the 1D problem

$$-(\alpha(u)u)' + au = f(u), \quad x \in (0, L), \quad \alpha(u(0))u'(0) = C, \quad u(L) = D. \quad (50)$$

The problem (50) arises from the stationary limit of a diffusion equation,

$$\frac{\partial u}{\partial t} = \frac{\partial}{\partial x} \left(\alpha(u) \frac{\partial u}{\partial x} \right) - au + f(u), \quad (51)$$

as $t \rightarrow \infty$ and $\partial u / \partial t \rightarrow 0$. Alternatively, the problem (50) arises at each time level from implicit time discretization of (51). For example, a Backward Euler scheme for (51) leads to

$$\frac{u^n - u^{n-1}}{\Delta t} = \frac{d}{dx} \left(\alpha(u^n) \frac{du^n}{dx} \right) - au^n + f(u^n). \quad (52)$$

Introducing $u(x)$ for $u^n(x)$, $u^{(1)}$ for u^{n-1} , and defining $f(u)$ in (50) to be $f(u)$ in (52) plus $u^{n-1} / \Delta t$, gives (50) with $a = 1 / \Delta t$.

4.1 Finite difference discretization

Since the technical steps in finite difference discretization in space are so much simpler than the steps in the finite element method, we start with finite difference to illustrate the concept of handling this nonlinear problem and minimize the spatial discretization details.

The nonlinearity in the differential equation (50) poses no more difficulty than a variable coefficient, as in the term $(\alpha(x)u)'$. We can therefore use a standard finite difference approach to discretizing the Laplace term with a variable coefficient:

$$[-D_x \alpha D_x u + au = f]_i.$$

Writing this out for a uniform mesh with points $x_i = i\Delta x$, $i = 0, \dots, N_x$, leads to

$$-\frac{1}{\Delta x^2} \left(\alpha_{i+\frac{1}{2}}(u_{i+1} - u_i) - \alpha_{i-\frac{1}{2}}(u_i - u_{i-1}) \right) + au_i = f(u_i). \quad (53)$$

This equation is valid at all the mesh points $i = 0, 1, \dots, N_x - 1$. At $i = N_x$ we have the Dirichlet condition $u_i = D$. The only difference from the case with $(\alpha(x)u)'$ and $f(x)$ is that now α and f are functions of u and not only on x : $(\alpha(u(x))u)'$ and $f(u(x))$.

The quantity $\alpha_{i+\frac{1}{2}}$, evaluated between two mesh points, needs a comment. Since α depends on u and u is only known at the mesh points, we need to express $\alpha_{i+\frac{1}{2}}$ in terms of u_i and u_{i+1} . For this purpose we use an arithmetic mean, although a harmonic mean is also common in this context if α features large jumps. There are two choices of arithmetic means:

$$\alpha_{i+\frac{1}{2}} \approx \alpha(\frac{1}{2}(u_i + u_{i+1})) = [\alpha(\bar{u}^x)]^{i+\frac{1}{2}}, \quad (54)$$

$$\alpha_{i+\frac{1}{2}} \approx \frac{1}{2}(\alpha(u_i) + \alpha(u_{i+1})) = [\alpha(u)^x]^{i+\frac{1}{2}} \quad (55)$$

Equation (53) with the latter approximation then looks like

$$-\frac{1}{2\Delta x^2} ((\alpha(u_i) + \alpha(u_{i+1}))(u_{i+1} - u_i) - (\alpha(u_{i-1}) + \alpha(u_i))(u_i - u_{i-1})) + au_i = f(u_i), \quad (56)$$

or written more compactly,

$$[-D_x \bar{\alpha}^x D_x u + au = f]_i.$$

At mesh point $i = 0$ we have the boundary condition $\alpha(u)u' = C$, which is discretized by

$$[\alpha(u)D_{2x}u = C]_0,$$

meaning

$$\alpha(u_0) \frac{u_1 - u_{-1}}{2\Delta x} = C. \quad (57)$$

The fictitious value u_{-1} can be eliminated with the aid of (56) for $i = 0$. Formally, (56) should be solved with respect to u_{i-1} and that value (for $i = 0$) should be inserted in (57), but it is algebraically much easier to do it the other way around. Alternatively, one can use a ghost cell $[-\Delta x, 0]$ and update the u_{-1} value in the ghost cell according to (57) after every Picard or Newton iteration. Such an approach means that we use a known u_{-1} value in (56) from the previous iteration.

4.2 Solution of algebraic equations

The structure of the equation system. The nonlinear algebraic equations (56) are of the form $A(u)u = b(u)$ with

$$\begin{aligned} A_{i,i} &= \frac{1}{2\Delta x^2} (\alpha(u_{i-1}) + 2\alpha(u_i) + \alpha(u_{i+1})) + a, \\ A_{i,i-1} &= -\frac{1}{2\Delta x^2} (\alpha(u_{i-1}) + \alpha(u_i)), \\ A_{i,i+1} &= -\frac{1}{2\Delta x^2} (\alpha(u_i) + \alpha(u_{i+1})), \\ b_i &= f(u_i). \end{aligned}$$

The matrix $A(u)$ is tridiagonal: $A_{i,j} = 0$ for $j > i + 1$ and $j < i - 1$.

The above expressions are valid for internal mesh points $1 \leq i \leq N_x - 1$. For $i = 0$ we need to express $u_{i-1} = u_{-1}$ in terms of u_1 using (57):

$$u_{-1} = u_1 - \frac{2\Delta x}{\alpha(u_0)} C. \quad (58)$$

This value must be inserted in $A_{0,0}$. The expression for $A_{i,i+1}$ applies for $i = 0$, and $A_{i,i-1}$ does not enter the system when $i = 0$.

Regarding the last equation, its form depends on whether we include the Dirichlet condition $u(L) = D$, meaning $u_{N_x} = D$, in the nonlinear algebraic equation system or not. Suppose we choose $(u_0, u_1, \dots, u_{N_x-1})$ as unknowns, later referred to as *systems without Dirichlet conditions*. The last equation corresponds to $i = N_x - 1$. It involves the boundary value u_{N_x} , which is substituted by D . If the unknown vector includes the boundary value, $(u_0, u_1, \dots, u_{N_x})$, later referred to as *system including Dirichlet conditions*, the equation for $i = N_x - 1$ just involves the unknown u_{N_x} , and the final equation becomes $u_{N_x} = D$, corresponding to $A_{i,i} = 1$ and $b_i = D$ for $i = N_x$.

Picard iteration. The obvious Picard iteration scheme is to use previously computed values of u_i in $A(u)$ and $b(u)$, as described more in detail in Section 2. With the notation u^- for the most recently computed value of u , we have the system $F(u) \approx \hat{F}(u) = A(u^-)u - b(u^-)$, with $F = (F_0, F_1, \dots, F_m)$, $u = (u_0, u_1, \dots, u_m)$. The index m is N_x if the system includes the Dirichlet condition as a separate equation and $N_x - 1$ otherwise. The matrix $A(u^-)$ is tridiagonal, so the solution procedure is to fill a tridiagonal matrix data structure and the right-hand side vector with the right numbers and call a Gaussian elimination routine for tridiagonal linear systems.

Mesh with two cells. It helps on the understanding of the details to write out all the mathematics in a specific case with a small mesh, say just two cells ($N_x = 2$). We use u_i^- for the i -th component in u^- .

The starting point is the basic expressions for the nonlinear equations at mesh point $i = 0$ and $i = 1$ are

$$A_{0,-1}u_{-1} + A_{0,0}u_0 + A_{0,1}u_1 = b_0, \quad (59)$$

$$A_{1,0}u_0 + A_{1,1}u_1 + A_{1,2}u_2 = b_1. \quad (60)$$

Equation (59) written out reads

$$\begin{aligned} \frac{1}{2\Delta x^2} &(-(\alpha(u_{-1}) + \alpha(u_0))u_{-1} + \\ &(\alpha(u_{-1}) + 2\alpha(u_0) + \alpha(u_1))u_0 - \\ &(\alpha(u_0) + \alpha(u_1))u_1 + au_0 = f(u_0). \end{aligned}$$

We must then replace u_{-1} by (58). With Picard iteration we get

$$\begin{aligned} \frac{1}{2\Delta x^2} &(-(\alpha(u_{-1}^-) + 2\alpha(u_0^-) + \alpha(u_1^-))u_1 + \\ &(\alpha(u_{-1}^-) + 2\alpha(u_0^-) + \alpha(u_1^-))u_0 + au_0 \\ &= f(u_0^-) - \frac{1}{\alpha(u_0^-)} \Delta x (\alpha(u_{-1}^-) + \alpha(u_0^-))C, \end{aligned}$$

where

$$u_{-1}^- = u_1^- - \frac{2\Delta x}{\alpha(u_0^-)} C.$$

Equation (60) contains the unknown u_2 for which we have a Dirichlet condition. In case we omit the condition as a separate equation, (60) with Picard iteration becomes

$$\begin{aligned} & \frac{1}{2\Delta x^2}(-(\alpha(u_0^-) + \alpha(u_1^-))u_0 + \\ & (\alpha(u_0^-) + 2\alpha(u_1^-) + \alpha(u_2^-))u_1 - \\ & (\alpha(u_1^-) + \alpha(u_2^-))u_2 + au_1 = f(u_1^-). \end{aligned}$$

We must now move the u_2 term to the right-hand side and replace all occurrences of u_2 by D :

$$\begin{aligned} & \frac{1}{2\Delta x^2}(-(\alpha(u_0^-) + \alpha(u_1^-))u_0 + \\ & (\alpha(u_0^-) + 2\alpha(u_1^-) + \alpha(D))u_1 + au_1 \\ & = f(u_1^-) + \frac{1}{2\Delta x^2}(\alpha(u_1^-) + \alpha(D))D. \end{aligned}$$

The two equations can be written as a 2×2 system:

$$\begin{pmatrix} B_{0,0} & B_{0,1} \\ B_{1,0} & B_{1,1} \end{pmatrix} \begin{pmatrix} u_0 \\ u_1 \end{pmatrix} = \begin{pmatrix} d_0 \\ d_1 \end{pmatrix},$$

where

$$B_{0,0} = \frac{1}{2\Delta x^2}(\alpha(u_{-1}^-) + 2\alpha(u_0^-) + \alpha(u_1^-)) + a \quad (61)$$

$$B_{0,1} = -\frac{1}{2\Delta x^2}(\alpha(u_{-1}^-) + 2\alpha(u_0^-) + \alpha(u_1^-)), \quad (62)$$

$$B_{1,0} = -\frac{1}{2\Delta x^2}(\alpha(u_0^-) + \alpha(u_1^-)), \quad (63)$$

$$B_{1,1} = \frac{1}{2\Delta x^2}(\alpha(u_0^-) + 2\alpha(u_1^-) + \alpha(D)) + a, \quad (64)$$

$$d_0 = f(u_0^-) - \frac{1}{\alpha(u_0^-)\Delta x}(\alpha(u_{-1}^-) + \alpha(u_0^-))C, \quad (65)$$

$$d_1 = f(u_1^-) + \frac{1}{2\Delta x^2}(\alpha(u_1^-) + \alpha(D))D. \quad (66)$$

The system with the Dirichlet condition becomes

$$\begin{pmatrix} B_{0,0} & B_{0,1} & 0 \\ B_{1,0} & B_{1,1} & B_{1,2} \\ 0 & 0 & 1 \end{pmatrix} \begin{pmatrix} u_0 \\ u_1 \\ u_2 \end{pmatrix} = \begin{pmatrix} d_0 \\ d_1 \\ D \end{pmatrix},$$

with

$$B_{1,1} = \frac{1}{2\Delta x^2}(\alpha(u_0^-) + 2\alpha(u_1^-) + \alpha(u_2)) + a, \quad (67)$$

$$B_{1,2} = -\frac{1}{2\Delta x^2}(\alpha(u_1^-) + \alpha(u_2)), \quad (68)$$

$$d_1 = f(u_1^-). \quad (69)$$

Other entries are as in the 2×2 system.

Newton's method. The Jacobian must be derived in order to use Newton's method. Here it means that we need to differentiate $F(u) = A(u)u - b(u)$ with respect to the unknown parameters u_0, u_1, \dots, u_m ($m = N_x$ or $m = N_x - 1$, depending on whether the Dirichlet condition is included in the nonlinear system $F(u) = 0$ or not). Nonlinear equation number i has the structure

$$F_i = A_{i,i-1}(u_{i-1}, u_i)u_{i-1} + A_{i,i}(u_{i-1}, u_i, u_{i+1})u_i + A_{i,i+1}(u_i, u_{i+1})u_{i+1} - b_i(u_i).$$

Computing the Jacobian requires careful differentiation. For example,

$$\begin{aligned} \frac{\partial}{\partial u_i}(A_{i,i}(u_{i-1}, u_i, u_{i+1})u_i) &= \frac{\partial A_{i,i}}{\partial u_i}u_i + A_{i,i} \frac{\partial u_i}{\partial u_i} \\ &= \frac{\partial}{\partial u_i} \left(\frac{1}{2\Delta x^2}(\alpha(u_{i-1}) + 2\alpha(u_i) + \alpha(u_{i+1})) + a \right) u_i + \\ & \quad \frac{1}{2\Delta x^2}(\alpha(u_{i-1}) + 2\alpha(u_i) + \alpha(u_{i+1})) + a \\ &= \frac{1}{2\Delta x^2}(2\alpha'(u_i)u_i + \alpha(u_{i-1}) + 2\alpha(u_i) + \alpha(u_{i+1})) + a. \end{aligned}$$

The complete Jacobian becomes

$$\begin{aligned} J_{i,i} &= \frac{\partial F_i}{\partial u_i} = \frac{\partial A_{i,i-1}}{\partial u_i}u_{i-1} + \frac{\partial A_{i,i}}{\partial u_i}u_i + A_{i,i} + \frac{\partial A_{i,i+1}}{\partial u_i}u_{i+1} - \frac{\partial b_i}{\partial u_i} \\ &= \frac{1}{2\Delta x^2}(-\alpha'(u_i)u_{i-1} + 2\alpha'(u_i)u_i + \alpha(u_{i-1}) + 2\alpha(u_i) + \alpha(u_{i+1})) + \\ & \quad a - \frac{1}{2\Delta x^2}\alpha'(u_i)u_{i+1} - b'(u_i), \\ J_{i,i-1} &= \frac{\partial F_i}{\partial u_{i-1}} = \frac{\partial A_{i,i-1}}{\partial u_{i-1}}u_{i-1} + A_{i-1,i} + \frac{\partial A_{i,i}}{\partial u_{i-1}}u_i - \frac{\partial b_i}{\partial u_{i-1}} \\ &= \frac{1}{2\Delta x^2}(-\alpha'(u_{i-1})u_{i-1} - (\alpha(u_{i-1}) + \alpha(u_i)) + \alpha'(u_{i-1})u_i), \\ J_{i,i+1} &= \frac{\partial A_{i,i+1}}{\partial u_{i-1}}u_{i+1} + A_{i+1,i} + \frac{\partial A_{i,i}}{\partial u_{i+1}}u_i - \frac{\partial b_i}{\partial u_{i+1}} \\ &= \frac{1}{2\Delta x^2}(-\alpha'(u_{i+1})u_{i+1} - (\alpha(u_i) + \alpha(u_{i+1})) + \alpha'(u_{i+1})u_i). \end{aligned}$$

The explicit expression for nonlinear equation number i , $F_i(u_0, u_1, \dots)$, arises from moving the $f(u_i)$ term in (56) to the left-hand side:

$$\begin{aligned} F_i &= -\frac{1}{2\Delta x^2}((\alpha(u_i) + \alpha(u_{i+1}))(u_{i+1} - u_i) - (\alpha(u_{i-1}) + \alpha(u_i))(u_i - u_{i-1})) \\ & \quad + au_i - f(u_i) = 0. \end{aligned} \quad (70)$$

At the boundary point $i = 0$, u_{-1} must be replaced using the formula (58). When the Dirichlet condition at $i = N_x$ is not a part of the equation system, the last equation $F_m = 0$ for $m = N_x - 1$ involves the quantity u_{N_x-1} which must be replaced by D . If u_{N_x} is treated as an unknown in the system, the last equation $F_m = 0$ has $m = N_x$ and reads

$$F_{N_x}(u_0, \dots, u_{N_x}) = u_{N_x} - D = 0.$$

Similar replacement of u_{-1} and u_{N_x} must be done in the Jacobian for the first and last row. When u_{N_x} is included as an unknown, the last row in the Jacobian must help implement the condition $\delta u_{N_x} = 0$, since we assume that u contains the right Dirichlet value at the beginning of the iteration ($u_{N_x} = D$), and then the Newton update should be zero for $i = 0$, i.e., $\delta u_{N_x} = 0$. This also forces the right-hand side to be $b_i = 0$, $i = N_x$.

We have seen, and can see from the present example, that the linear system in Newton's method contains all the terms present in the system that arises in the Picard iteration method. The extra terms in Newton's method can be multiplied by a factor such that it is easy to program one linear system and set this factor to 0 or 1 to generate the Picard or Newton system.

4.3 Galerkin-type discretization

For a Galerkin-type discretization, which may be developed into a finite element method, we first need to derive the variational problem. Let V be an appropriate function space with basis functions $\{\psi_i\}_{i \in \mathcal{I}_s}$. Because of the Dirichlet condition at $x = L$ we require $\psi_i(L) = 0$, $i \in \mathcal{I}_s$. The approximate solution is written as $u = D + \sum_{j \in \mathcal{I}_s} c_j \psi_j$, where the term D can be viewed as a boundary function needed to implement the Dirichlet condition $u(L) = D$.

Using Galerkin's method, we multiply the differential equation by any $v \in V$ and integrate terms with second-order derivatives by parts:

$$\int_0^L \alpha(u) u' v' dx + \int_0^L a u v dx = \int_0^L f(u) v dx + [\alpha(u) u' v]_0^L, \quad \forall v \in V.$$

The Neumann condition at the boundary $x = 0$ is inserted in the boundary term:

$$[\alpha(u) u' v]_0^L = \alpha(u(L)) u'(L) v(L) - \alpha(u(0)) u'(0) v(0) = 0 - C v(0) = -C v(0).$$

(Recall that since $\psi_i(L) = 0$, any linear combination v of the basis functions also vanishes at $x = L$: $v(L) = 0$.) The variational problem is then: find $u \in V$ such that

$$\int_0^L \alpha(u) u' v' dx + \int_0^L a u v dx = \int_0^L f(u) v dx - C v(0), \quad \forall v \in V. \quad (71)$$

To derive the algebraic equations, we note that $\forall v \in V$ is equivalent with $v = \psi_i$ for $i \in \mathcal{I}_s$. Setting $u = D + \sum_j c_j \psi_j$ and sorting terms results in the linear system

$$\begin{aligned} & \sum_{j \in \mathcal{I}_s} \left(\int_0^L \left(\alpha(D + \sum_{k \in \mathcal{I}_s} c_k \psi_k) \psi_j' \psi_j' + a \psi_j \psi_j \right) dx \right) c_j \\ & = \int_0^L f(D + \sum_{k \in \mathcal{I}_s} c_k \psi_k) \psi_j dx - C \psi_j(0), \quad i \in \mathcal{I}_s. \end{aligned} \quad (72)$$

Fundamental integration problem. Methods that use the Galerkin or weighted residual method face a fundamental difficulty in nonlinear problems: how can we integrate a terms like $\int_0^L \alpha(\sum_k c_k \psi_k) \psi_j' \psi_j' dx$ and $\int_0^L f(\sum_k c_k \psi_k) \psi_j dx$ when we do not know the c_k coefficients in the argument of the α and f functions? We can resort to numerical integration, provided an approximate $\sum_k c_k \psi_k$ can be used for the argument u in f and α . This is the approach used in computer programs.

However, if we want to look more mathematically into the structure of the algebraic equations generated by the finite element method in nonlinear problems, and compare such equations

with those arising in the finite difference method, we need techniques that enable integration of expressions like $\int_0^L f(\sum_k c_k \psi_k) \psi_j dx$ *by hand*. Two such techniques will be shown: the group finite element and numerical integration based on the nodes only. Both techniques are approximate, but they allow us to see the difference equations in the finite element method. The details are worked out in Appendix A. Some readers will prefer to dive into these symbolic calculations to gain more understanding of nonlinear finite element equations, while others will prefer to continue with computational algorithms (in the next two sections) rather than analysis.

4.4 Picard iteration defined from the variational form

Consider the problem (50) with the corresponding variational form (71). Our aim is to define a Picard iteration based on this variational form without any attempt to compute integrals symbolically as in the previous three sections. The idea in Picard iteration is to use a previously computed u value in the nonlinear functions $\alpha(u)$ and $f(u)$. Let u^- be the available approximation to u from the previous Picard iteration. The linearized variational form for Picard iteration is then

$$\int_0^L (\alpha(u^-) u' v' + a u v) dx = \int_0^L f(u^-) v dx - C v(0), \quad \forall v \in V. \quad (73)$$

This is a linear problem $a(u, v) = L(v)$ with bilinear and linear forms

$$a(u, v) = \int_0^L (\alpha(u^-) u' v' + a u v) dx, \quad L(v) = \int_0^L f(u^-) v dx - C v(0).$$

Make sure to distinguish the coefficient a in $a u v$ from the differential equation from the a in the abstract bilinear form notation $a(\cdot, \cdot)$.

The linear system associated with (73) is computed in the standard way. Technically, we are back to solving $-(\alpha(x) u')' + a u = f(x)$. The unknown u is sought on the form $u = B(x) + \sum_{j \in \mathcal{I}_s} c_j \psi_j$, with $B(x) = D$ and $\psi_i = \varphi_{\nu(i)}$, $\nu(i) = i$, and $\mathcal{I}_s = \{0, 1, \dots, N = N_n - 2\}$.

4.5 Newton's method defined from the variational form

Application of Newton's method to the nonlinear variational form (71) arising from the problem (50) requires identification of the nonlinear algebraic equations $F_i = 0$. Although we originally denoted the unknowns in nonlinear algebraic equations by u_0, \dots, u_N , it is in the present context most natural to have the unknowns as c_0, \dots, c_N and write

$$F_i(c_0, \dots, c_N) = 0, \quad i \in \mathcal{I}_s,$$

and define the Jacobian as $J_{i,j} = \partial F_i / \partial c_j$ for $i, j \in \mathcal{I}_s$.

The specific form of the equations $F_i = 0$ follows from the variational form

$$\int_0^L (\alpha(u) u' v' + a u v) dx = \int_0^L f(u) v dx - C v(0), \quad \forall v \in V,$$

by choosing $v = \psi_i$, $i \in \mathcal{I}_s$, and setting $u = \sum_{j \in \mathcal{I}_s} c_j \psi_j$, maybe with a boundary function to incorporate Dirichlet conditions.

With $v = \psi_i$ we get

$$F_i = \int_0^L (\alpha(u) u' \psi_i' + a u \psi_i - f(u) \psi_i) dx + C \psi_i(0) = 0, \quad i \in \mathcal{I}_s. \quad (74)$$

In the differentiations leading to the Jacobian we will frequently use the results

$$\frac{\partial u}{\partial c_j} = \frac{\partial}{\partial c_j} \sum_k c_k \psi_k = \psi_j, \quad \frac{\partial u'}{\partial c_j} = \frac{\partial}{\partial c_j} \sum_k c_k \psi'_k = \psi'_j.$$

The derivation of the Jacobian of (74) goes as

$$\begin{aligned} J_{i,j} &= \frac{\partial F_i}{\partial c_j} = \int_0^L \frac{\partial}{\partial c_j} (\alpha(u) u' \psi'_i + a u \psi_i - f(u) \psi_i) dx \\ &= \int_0^L ((\alpha'(u) \frac{\partial u}{\partial c_j} u' + \alpha(u) \frac{\partial u'}{\partial c_j}) \psi'_i + a \frac{\partial u}{\partial c_j} \psi_i - f'(u) \frac{\partial u}{\partial c_j} \psi_i) dx \\ &= \int_0^L ((\alpha'(u) \psi_j u' + \alpha(u) \psi'_j) \psi'_i + a \psi_j \psi_i - f'(u) \psi_j \psi_i) dx \\ &= \int_0^L (\alpha'(u) u' \psi'_i \psi_j + \alpha(u) \psi'_i \psi'_j + (a - f'(u)) \psi_i \psi_j) dx \end{aligned} \quad (75)$$

One must be careful about the prime symbol as differentiation!

In α' the derivative is with respect to the independent variable in the α function, and that is u , so

$$\alpha' = \frac{d\alpha}{du},$$

while in u' the differentiation is with respect to x , so

$$u' = \frac{du}{dx}.$$

Similarly, f is a function of u , so f' means df/du .

When calculating the right-hand side vector F_i and the coefficient matrix $J_{i,j}$ in the linear system to be solved in each Newton iteration, one must use a previously computed u , denoted by u^- , for the symbol u in (74) and (75). With this notation we have

$$F_i = \int_0^L (\alpha(u^-) u'^- \psi'_i + (a u^- - f(u^-)) \psi_i) dx - C \psi_i(0), \quad i \in \mathcal{I}_s, \quad (76)$$

$$J_{i,j} = \int_0^L (\alpha'(u^-) u'^- \psi'_i \psi_j + \alpha(u^-) \psi'_i \psi'_j + (a - f'(u^-)) \psi_i \psi_j) dx, \quad i, j \in \mathcal{I}_s. \quad (77)$$

These expressions can be used for any basis $\{\psi_i\}_{i \in \mathcal{I}_s}$. Choosing finite element functions for ψ_i , one will normally want to compute the integral contribution cell by cell, working in a reference cell. To this end, we restrict the integration to one cell and transform the cell to $[-1, 1]$. The most recently computed approximation u^- to u becomes $\tilde{u}^- = \sum_t \tilde{u}_t^{-1} \tilde{\varphi}_t(X)$ over the reference element, where \tilde{u}_t^{-1} is the value of u^- at global node (or degree of freedom) $q(e, t)$ corresponding to the local node t (or degree of freedom). The formulas (76) and (77) then change to

$$\tilde{F}_r^{(e)} = \int_{-1}^1 (\alpha(\tilde{u}^-) \tilde{u}'^- \tilde{\varphi}'_r + (a \tilde{u}^- - f(\tilde{u}^-)) \tilde{\varphi}_r) \det J dX - C \tilde{\varphi}_r(0), \quad (78)$$

$$\tilde{J}_{r,s}^{(e)} = \int_{-1}^1 (\alpha'(\tilde{u}^-) \tilde{u}'^- \tilde{\varphi}'_r \tilde{\varphi}_s + \alpha(\tilde{u}^-) \tilde{\varphi}'_r \tilde{\varphi}'_s + (a - f'(\tilde{u}^-)) \tilde{\varphi}_r \tilde{\varphi}_s) \det J dX, \quad (79)$$

with $r, s \in \mathcal{I}_d$ runs over the local degrees of freedom.

Many finite element programs require the user to provide F_i and $J_{i,j}$. Some programs, like FEniCS², are capable of automatically deriving $J_{i,j}$ if F_i is specified.

Dirichlet conditions. Incorporation of the Dirichlet values by assembling contributions from all degrees of freedom and then modifying the linear system can obviously be applied to Picard iteration as that method involves a standard linear system. In the Newton system, however, the unknown is a correction δu to the solution. Dirichlet conditions are implemented by inserting them in the initial guess u^- for the Newton iteration and implementing $\delta u_i = 0$ for all known degrees of freedom. The manipulation of the linear system follows exactly the algorithm in the linear problems, the only difference being that the known values are zero.

5 Multi-dimensional PDE problems

The fundamental ideas in the derivation of F_i and $J_{i,j}$ in the 1D model problem are easily generalized to multi-dimensional problems. Nevertheless, the expressions involved are slightly different, with derivatives in x replaced by ∇ , so we present some examples below in detail.

5.1 Finite element discretization

As an example, Backward Euler discretization of the PDE

$$u_t = \nabla \cdot (\alpha(u) \nabla u) + f(u), \quad (80)$$

gives the nonlinear time-discrete PDEs

$$u^n - \Delta t \nabla \cdot (\alpha(u^n) \nabla u^n) - \Delta t f(u^n) = u^{n-1}.$$

We may alternatively write this equation with u for u^n and $u^{(1)}$ for u^{n-1} :

$$u - \Delta t \nabla \cdot (\alpha(u) \nabla u) - \Delta t f(u) = u^{(1)}.$$

Understand the meaning of the symbol u in various formulas!

Note that the mathematical meaning of the symbol u changes in the above equations: $u(\mathbf{x}, t)$ is the exact solution of (80), $u^n(\mathbf{x})$ is an approximation to the exact solution at $t = t_n$, while $u(\mathbf{x})$ in the latter equation is a synonym for u^n . Below, this $u(\mathbf{x})$ will be approximated by a new $u = \sum_k c_k \psi_k(\mathbf{x})$ in space, and then the actual u symbol used in the Picard and Newton iterations is a further approximation of $\sum_k c_k \psi_k$ arising from the nonlinear iteration algorithm.

²<http://fenicsproject.org>

Much literature reserves u for the exact solution, uses $u_h(x, t)$ for the finite element solution that varies continuously in time, introduces perhaps u_h^n as the approximation of u_h at time t_n , arising from some time discretization, and then finally applies $u_h^{n,k}$ for the approximation to u_h^n in the k -th iteration of a Picard or Newton method. The converged solution at the previous time step can be called u_h^{n-1} , but then this quantity is an approximate solution of the nonlinear equations (at the previous time level), while the counterpart u_h^n is formally the exact solution of the nonlinear equations at the current time level. The various symbols in the mathematics can in this way be clearly distinguished. However, we favor to use u for the quantity that is most naturally called u in the code, and that is the most recent approximation to the solution, e.g., named $u_h^{n,k}$ above. This is also the key quantity of interest in mathematical derivations of algorithms as well. Choosing u this way makes the most important mathematical cleaner than using more cluttered notation as $u_h^{n,k}$. We therefore introduce other symbols for other versions of the unknown function. It is most appropriate for us to say that $u_e(\mathbf{x}, t)$ is the exact solution, u^n in the equation above is the approximation to $u_e(\mathbf{x}, t_n)$ after time discretization, and u is the spatial approximation to u^n from the most recent iteration in a nonlinear iteration method.

Let us assume homogeneous Neumann conditions on the entire boundary for simplicity in the boundary term. The variational form becomes: find $u \in V$ such that

$$\int_{\Omega} (uv + \Delta t \alpha(u) \nabla u \cdot \nabla v - \Delta t f(u)v - u^{(1)}v) dx = 0, \quad \forall v \in V. \quad (81)$$

The nonlinear algebraic equations follow from setting $v = \psi_i$ and using the representation $u = \sum_k c_k \psi_k$, which we just write as

$$F_i = \int_{\Omega} (u\psi_i + \Delta t \alpha(u) \nabla u \cdot \nabla \psi_i - \Delta t f(u)\psi_i - u^{(1)}\psi_i) dx. \quad (82)$$

Picard iteration needs a linearization where we use the most recent approximation u^- to u in α and f :

$$F_i \approx \hat{F}_i = \int_{\Omega} (u\psi_i + \Delta t \alpha(u^-) \nabla u \cdot \nabla \psi_i - \Delta t f(u^-)\psi_i - u^{(1)}\psi_i) dx. \quad (83)$$

The equations $\hat{F}_i = 0$ are now linear and we can easily derive a linear system $\sum_{j \in \mathcal{I}_s} A_{i,j} c_j = b_i$, $i \in \mathcal{I}_s$, for the unknown coefficients $\{c_i\}_{i \in \mathcal{I}_s}$ by inserting $u = \sum_j c_j \psi_j$. We get

$$A_{i,j} = \int_{\Omega} (\varphi_j \psi_i + \Delta t \alpha(u^-) \nabla \varphi_j \cdot \nabla \psi_i) dx, \quad b_i = \int_{\Omega} (\Delta t f(u^-)\psi_i + u^{(1)}\psi_i) dx.$$

In Newton's method we need to evaluate F_i with the known value u^- for u :

$$F_i \approx \hat{F}_i = \int_{\Omega} (u^- \psi_i + \Delta t \alpha(u^-) \nabla u^- \cdot \nabla \psi_i - \Delta t f(u^-)\psi_i - u^{(1)}\psi_i) dx. \quad (84)$$

The Jacobian is obtained by differentiating (82) and using

$$\frac{\partial u}{\partial c_j} = \sum_k \frac{\partial}{\partial c_j} c_k \psi_k = \psi_j, \quad (85)$$

$$\frac{\partial \nabla u}{\partial c_j} = \sum_k \frac{\partial}{\partial c_j} c_k \nabla \psi_k = \nabla \psi_j. \quad (86)$$

The result becomes

$$J_{i,j} = \frac{\partial F_i}{\partial c_j} = \int_{\Omega} (\psi_j \psi_i + \Delta t \alpha'(u) \psi_j \nabla u \cdot \nabla \psi_i + \Delta t \alpha(u) \nabla \psi_j \cdot \nabla \psi_i - \Delta t f'(u) \psi_j \psi_i) dx. \quad (87)$$

The evaluation of $J_{i,j}$ as the coefficient matrix in the linear system in Newton's method applies the known approximation u^- for u :

$$J_{i,j} = \int_{\Omega} (\psi_j \psi_i + \Delta t \alpha'(u^-) \psi_j \nabla u^- \cdot \nabla \psi_i + \Delta t \alpha(u^-) \nabla \psi_j \cdot \nabla \psi_i - \Delta t f'(u^-) \psi_j \psi_i) dx. \quad (88)$$

Hopefully, this example also shows how convenient the notation with u and u^- is: the unknown to be computed is always u and linearization by inserting known (previously computed) values is a matter of adding an underscore. One can take great advantage of this quick notation in software [2].

Non-homogeneous Neumann conditions. A natural physical flux condition for the PDE (80) takes the form of a non-homogeneous Neumann condition

$$-\alpha(u) \frac{\partial u}{\partial n} = g, \quad \mathbf{x} \in \partial\Omega_N, \quad (89)$$

where g is a prescribed function and $\partial\Omega_N$ is a part of the boundary of the domain Ω . From integrating $\int_{\Omega} \nabla \cdot (\alpha \nabla u) dx$ by parts, we get a boundary term

$$\int_{\partial\Omega_N} \alpha(u) \frac{\partial u}{\partial n} v ds. \quad (90)$$

Inserting the condition (89) into this term results in an integral over prescribed values:

$$- \int_{\partial\Omega_N} g v ds.$$

The nonlinearity in the $\alpha(u)$ coefficient condition (89) therefore does not contribute with a nonlinearity in the variational form.

Robin conditions. Heat conduction problems often apply a kind of Newton's cooling law, also known as a Robin condition, at the boundary:

$$-\alpha(u) \frac{\partial u}{\partial n} = h(u)(u - T_s(t)), \quad \mathbf{x} \in \partial\Omega_R, \quad (91)$$

where $h(u)$ is a heat transfer coefficient between the body (Ω) and its surroundings, T_s is the temperature of the surroundings, and $\partial\Omega_R$ is a part of the boundary where this Robin condition applies. The boundary integral (90) now becomes

$$\int_{\partial\Omega_R} h(u)(u - T_s(t))v ds.$$

In many physical applications, $h(u)$ can be taken as constant, and then the boundary term is linear in u , otherwise it is nonlinear and contributes to the Jacobian in a Newton method.

Linearization in a Picard method will typically use a known value in h , but keep the u in $u - T_s$ as unknown: $h(u^-)(u - T_s(t))$. Exercise 15 asks you to carry out the details.

5.2 Finite difference discretization

A typical diffusion equation

$$u_t = \nabla \cdot (\alpha(u)\nabla u) + f(u),$$

can be discretized by (e.g.) a Backward Euler scheme, which in 2D can be written

$$[D_t^- u = D_x \overline{\alpha(u)^x} D_x u + D_y \overline{\alpha(u)^y} D_y u + f(u)]_{i,j}^n.$$

We do not dive into the details of handling boundary conditions now. Dirichlet and Neumann conditions are handled as in a corresponding linear, variable-coefficient diffusion problems.

Writing the scheme out, putting the unknown values on the left-hand side and known values on the right-hand side, and introducing $\Delta x = \Delta y = h$ to save some writing, one gets

$$\begin{aligned} u_{i,j}^n &- \frac{\Delta t}{h^2} \left(\frac{1}{2} (\alpha(u_{i,j}^n) + \alpha(u_{i+1,j}^n)) (u_{i+1,j}^n - u_{i,j}^n) \right. \\ &- \frac{1}{2} (\alpha(u_{i-1,j}^n) + \alpha(u_{i,j}^n)) (u_{i,j}^n - u_{i-1,j}^n) \\ &+ \frac{1}{2} (\alpha(u_{i,j}^n) + \alpha(u_{i,j+1}^n)) (u_{i,j+1}^n - u_{i,j}^n) \\ &\left. - \frac{1}{2} (\alpha(u_{i,j-1}^n) + \alpha(u_{i,j}^n)) (u_{i,j}^n - u_{i,j-1}^n) \right) - \Delta t f(u_{i,j}^n) = u_{i,j}^{n-1} \end{aligned}$$

This defines a nonlinear algebraic system on the form $A(u)u = b(u)$.

Picard iteration. The most recently computed values u^- of u^n can be used in α and f for a Picard iteration, or equivalently, we solve $A(u^-)u = b(u^-)$. The result is a linear system of the same type as arising from $u_t = \nabla \cdot (\alpha(\mathbf{x})\nabla u) + f(\mathbf{x}, t)$.

The Picard iteration scheme can also be expressed in operator notation:

$$[D_t^- u = D_x \overline{\alpha(u^-)^x} D_x u + D_y \overline{\alpha(u^-)^y} D_y u + f(u^-)]_{i,j}^n.$$

Newton's method. As always, Newton's method is technically more involved than Picard iteration. We first define the nonlinear algebraic equations to be solved, drop the superscript n (use u for u^n), and introduce $u^{(1)}$ for u^{n-1} :

$$\begin{aligned} F_{i,j} = u_{i,j} &- \frac{\Delta t}{h^2} \left(\right. \\ &\frac{1}{2} (\alpha(u_{i,j}) + \alpha(u_{i+1,j})) (u_{i+1,j} - u_{i,j}) - \\ &\frac{1}{2} (\alpha(u_{i-1,j}) + \alpha(u_{i,j})) (u_{i,j} - u_{i-1,j}) + \\ &\frac{1}{2} (\alpha(u_{i,j}) + \alpha(u_{i,j+1})) (u_{i,j+1} - u_{i,j}) - \\ &\left. \frac{1}{2} (\alpha(u_{i,j-1}) + \alpha(u_{i,j})) (u_{i,j} - u_{i,j-1}) \right) - \Delta t f(u_{i,j}) - u_{i,j}^{(1)} = 0. \end{aligned}$$

It is convenient to work with two indices i and j in 2D finite difference discretizations, but it complicates the derivation of the Jacobian, which then gets four indices. (Make sure you really understand the 1D version of this problem as treated in Section 4.1.) The left-hand expression of an equation $F_{i,j} = 0$ is to be differentiated with respect to each of the unknowns $u_{r,s}$ (recall that this is short notation for $u_{r,s}^n$), $r \in \mathcal{I}_x$, $s \in \mathcal{I}_y$:

$$J_{i,j,r,s} = \frac{\partial F_{i,j}}{\partial u_{r,s}}.$$

The Newton system to be solved in each iteration can be written as

$$\sum_{r \in \mathcal{I}_x} \sum_{s \in \mathcal{I}_y} J_{i,j,r,s} \delta u_{r,s} = -F_{i,j}, \quad i \in \mathcal{I}_x, \quad j \in \mathcal{I}_y.$$

Given i and j , only a few r and s indices give nonzero contribution to the Jacobian since $F_{i,j}$ contains $u_{i \pm 1, j}$, $u_{i, j \pm 1}$, and $u_{i,j}$. This means that $J_{i,j,r,s}$ has nonzero contributions only if $r = i \pm 1$, $s = j \pm 1$, as well as $r = i$ and $s = j$. The corresponding terms in $J_{i,j,r,s}$ are $J_{i,j,i-1,j}$, $J_{i,j,i+1,j}$, $J_{i,j,i,j-1}$, $J_{i,j,i,j+1}$, and $J_{i,j,i,j}$. Therefore, the left-hand side of the Newton system, $\sum_r \sum_s J_{i,j,r,s} \delta u_{r,s}$ collapses to

$$\begin{aligned} J_{i,j,r,s} \delta u_{r,s} &= J_{i,j,i,j} \delta u_{i,j} + J_{i,j,i-1,j} \delta u_{i-1,j} + J_{i,j,i+1,j} \delta u_{i+1,j} + J_{i,j,i,j-1} \delta u_{i,j-1} \\ &\quad + J_{i,j,i,j+1} \delta u_{i,j+1} \end{aligned}$$

The specific derivatives become

$$\begin{aligned} J_{i,j,i-1,j} &= \frac{\partial F_{i,j}}{\partial u_{i-1,j}} \\ &= \frac{\Delta t}{h^2} (\alpha'(u_{i-1,j}) (u_{i,j} - u_{i-1,j}) + \alpha(u_{i-1,j}) (-1)), \\ J_{i,j,i+1,j} &= \frac{\partial F_{i,j}}{\partial u_{i+1,j}} \\ &= \frac{\Delta t}{h^2} (-\alpha'(u_{i+1,j}) (u_{i+1,j} - u_{i,j}) - \alpha(u_{i+1,j})), \\ J_{i,j,i,j-1} &= \frac{\partial F_{i,j}}{\partial u_{i,j-1}} \\ &= \frac{\Delta t}{h^2} (\alpha'(u_{i,j-1}) (u_{i,j} - u_{i,j-1}) + \alpha(u_{i,j-1}) (-1)), \\ J_{i,j,i,j+1} &= \frac{\partial F_{i,j}}{\partial u_{i,j+1}} \\ &= \frac{\Delta t}{h^2} (-\alpha'(u_{i,j+1}) (u_{i,j+1} - u_{i,j}) - \alpha(u_{i,j+1})). \end{aligned}$$

The $J_{i,j,i,j}$ entry has a few more terms and is left as an exercise. Inserting the most recent approximation u^- for u in the J and F formulas and then forming $J\delta u = -F$ gives the linear system to be solved in each Newton iteration. Boundary conditions will affect the formulas when any of the indices coincide with a boundary value of an index.

5.3 Continuation methods

Picard iteration or Newton's method may diverge when solving PDEs with severe nonlinearities. Relaxation with $\omega < 1$ may help, but in highly nonlinear problems it can be necessary to introduce a *continuation parameter* Λ in the problem: $\Lambda = 0$ gives a version of the problem that is easy to solve, while $\Lambda = 1$ is the target problem. The idea is then to increase Λ in steps, $\Lambda_0 = 0, \Lambda_1 < \dots < \Lambda_n = 1$, and use the solution from the problem with Λ_{i-1} as initial guess for the iterations in the problem corresponding to Λ_i .

The continuation method is easiest to understand through an example. Suppose we intend to solve

$$-\nabla \cdot (|\nabla u|^q \nabla u) = f,$$

which is an equation modeling the flow of a non-Newtonian fluid through a channel or pipe. For $q = 0$ we have the Poisson equation (corresponding to a Newtonian fluid) and the problem is linear. A typical value for pseudo-plastic fluids may be $q_n = -0.8$. We can introduce the continuation parameter $\Lambda \in [0, 1]$ such that $q = q_n \Lambda$. Let $\{\Lambda_\ell\}_{\ell=0}^n$ be the sequence of Λ values in $[0, 1]$, with corresponding q values $\{q_\ell\}_{\ell=0}^n$. We can then solve a sequence of problems

$$-\nabla \cdot (|\nabla u^\ell|^{q_\ell} \nabla u^\ell) = f, \quad \ell = 0, \dots, n,$$

where the initial guess for iterating on u^ℓ is the previously computed solution $u^{\ell-1}$. If a particular Λ_ℓ leads to convergence problems, one may try a smaller increase in Λ : $\Lambda_* = \frac{1}{2}(\Lambda_{\ell-1} + \Lambda_\ell)$, and repeat halving the step in Λ until convergence is reestablished.

6 Exercises

Problem 1: Determine if equations are nonlinear or not

Classify each term in the following equations as linear or nonlinear. Assume that u , \mathbf{u} , and p are unknown functions and that all other symbols are known quantities.

1. $mu'' + \beta|u'|u' + cu = F(t)$
2. $u_t = \alpha u_{xx}$
3. $u_{tt} = c^2 \nabla^2 u$
4. $u_t = \nabla \cdot (\alpha(u) \nabla u) + f(x, y)$
5. $u_t + f(u)_x = 0$
6. $\mathbf{u}_t + \mathbf{u} \cdot \nabla \mathbf{u} = -\nabla p + r \nabla^2 \mathbf{u}, \nabla \cdot \mathbf{u} = 0$ (\mathbf{u} is a vector field)
7. $u' = f(u, t)$
8. $\nabla^2 u = \lambda e^u$

Filename: `nonlinear_vs_linear`.

Exercise 2: Derive and investigate a generalized logistic model

The logistic model for population growth is derived by assuming a nonlinear growth rate,

$$u' = a(u)u, \quad u(0) = I, \tag{92}$$

and the logistic model arises from the simplest possible choice of $a(u)$: $r(u) = \varrho(1 - u/M)$, where M is the maximum value of u that the environment can sustain, and ϱ is the growth under unlimited access to resources (as in the beginning when u is small). The idea is that $a(u) \sim \varrho$ when u is small and that $a(t) \rightarrow 0$ as $u \rightarrow M$.

An $a(u)$ that generalizes the linear choice is the polynomial form

$$a(u) = \varrho(1 - u/M)^p, \tag{93}$$

where $p > 0$ is some real number.

a) Formulate a Forward Euler, Backward Euler, and a Crank-Nicolson scheme for (92).

Hint. Use a geometric mean approximation in the Crank-Nicolson scheme: $[a(u)u]^{n+1/2} \approx a(u^n)u^{n+1}$.

b) Formulate Picard and Newton iteration for the Backward Euler scheme in a).

c) Implement the numerical solution methods from a) and b). Use `logistic.py`³ to compare the case $p = 1$ and the choice (93).

d) Implement unit tests that check the asymptotic limit of the solutions: $u \rightarrow M$ as $t \rightarrow \infty$.

Hint. You need to experiment to find what “infinite time” is (increases substantially with p) and what the appropriate tolerance is for testing the asymptotic limit.

e) Perform experiments with Newton and Picard iteration for the models (93) and (??). See how sensitive the number of iterations is to Δt and p .

Filename: `logistic_p`.

Problem 3: Experience the behavior of Newton's method

The program `Newton_demo.py`⁴ illustrates graphically each step in Newton's method and is run like

```
Terminal> python Newton_demo.py f dfdx x0 xmin xmax
```

Use this program to investigate potential problems with Newton's method when solving $e^{-0.5x^2} \cos(\pi x) = 0$. Try a starting point $x_0 = 0.8$ and $x_0 = 0.85$ and watch the different behavior. Just run

```
Terminal> python Newton_demo.py '0.2 + exp(-0.5***2)*cos(pi*x)' \
'-x*exp(-x**2)*cos(pi*x) - pi*exp(-x**2)*sin(pi*x)' \
0.85 -3 3
```

and repeat with 0.85 replaced by 0.8.

³<http://tinyurl.com/nm5587k/nonlin/logistic.py>

⁴http://tinyurl.com/nm5587k/nonlin/Newton_demo.py

Problem 4: Compute the Jacobian of a 2×2 system

Write up the system (18)-(19) in the form $F(u) = 0$, $F = (F_0, F_1)$, $u = (u_0, u_1)$, and compute the Jacobian $J_{i,j} = \partial F_i / \partial u_j$.

Problem 5: Solve nonlinear equations arising from a vibration ODE

Consider a nonlinear vibration problem

$$mu'' + bu'|u'| + s(u) = F(t), \quad (94)$$

where $m > 0$ is a constant, $b \geq 0$ is a constant, $s(u)$ a possibly nonlinear function of u , and $F(t)$ is a prescribed function. Such models arise from Newton's second law of motion in mechanical vibration problems where $s(u)$ is a spring or restoring force, mu'' is mass times acceleration, and $bu'|u'|$ models water or air drag.

a) Rewrite the equation for u as a system of two first-order ODEs, and discretize this system by a Crank-Nicolson (centered difference) method. With $v = u'$, we get a nonlinear term $v^{n+\frac{1}{2}}|v^{n+\frac{1}{2}}|$. Use a geometric average for $v^{n+\frac{1}{2}}$.

b) Formulate a Picard iteration method to solve the system of nonlinear algebraic equations.

c) Explain how to apply Newton's method to solve the nonlinear equations at each time level. Derive expressions for the Jacobian and the right-hand side in each Newton iteration.

Filename: `nonlin_vib`.

Exercise 6: Find the truncation error of arithmetic mean of products

In Section 3.4 we introduce alternative arithmetic means of a product. Say the product is $P(t)Q(t)$ evaluated at $t = t_{n+\frac{1}{2}}$. The exact value is

$$[PQ]^{n+\frac{1}{2}} = P^{n+\frac{1}{2}}Q^{n+\frac{1}{2}}$$

There are two obvious candidates for evaluating $[PQ]^{n+\frac{1}{2}}$ as a mean of values of P and Q at t_n and t_{n+1} . Either we can take the arithmetic mean of each factor P and Q ,

$$[PQ]^{n+\frac{1}{2}} \approx \frac{1}{2}(P^n + P^{n+1})\frac{1}{2}(Q^n + Q^{n+1}), \quad (95)$$

or we can take the arithmetic mean of the product PQ :

$$[PQ]^{n+\frac{1}{2}} \approx \frac{1}{2}(P^n Q^n + P^{n+1} Q^{n+1}). \quad (96)$$

The arithmetic average of $P(t_{n+\frac{1}{2}})$ is $\mathcal{O}(\Delta t^2)$:

$$P(t_{n+\frac{1}{2}}) = \frac{1}{2}(P^n + P^{n+1}) + \mathcal{O}(\Delta t^2).$$

A fundamental question is whether (95) and (96) have different orders of accuracy in $\Delta t = t_{n+1} - t_n$. To investigate this question, expand quantities at t_{n+1} and t_n in Taylor series around $t_{n+\frac{1}{2}}$, and subtract the true value $[PQ]^{n+\frac{1}{2}}$ from the approximations (95) and (96) to see what the order of the error terms are.

Hint. You may explore `sympy` for carrying out the tedious calculations. A general Taylor series expansion of $P(t + \frac{1}{2}\Delta t)$ around t involving just a general function $P(t)$ can be created as follows:

```
>>> from sympy import *
>>> t, dt = symbols('t dt')
>>> P = symbols('P', cls=Function)
>>> P(t).series(t, 0, 4)
P(0) + t*Subs(Derivative(P(_x), _x), (_x,), (0,)) +
t**2*Subs(Derivative(P(_x), _x, _x), (_x,), (0,))/2 +
t**3*Subs(Derivative(P(_x), _x, _x, _x), (_x,), (0,))/6 + O(t**4)
>>> P_p = P(t).series(t, 0, 4).subs(t, dt/2)
>>> P_p
P(0) + dt*Subs(Derivative(P(_x), _x), (_x,), (0,))/2 +
dt**2*Subs(Derivative(P(_x), _x, _x), (_x,), (0,))/8 +
dt**3*Subs(Derivative(P(_x), _x, _x, _x), (_x,), (0,))/48 + O(dt**4)
```

The error of the arithmetic mean, $\frac{1}{2}(P(-\frac{1}{2}\Delta t) + P(\frac{1}{2}\Delta t))$ for $t = 0$ is then

```
>>> P_m = P(t).series(t, 0, 4).subs(t, -dt/2)
>>> mean = Rational(1,2)*(P_m + P_p)
>>> error = simplify(expand(mean) - P(0))
>>> error
dt**2*Subs(Derivative(P(_x), _x, _x), (_x,), (0,))/8 + O(dt**4)
```

Use these examples to investigate the error of (95) and (96) for $n = 0$. (Choosing $n = 0$ is necessary for not making the expressions too complicated for `sympy`, but there is of course no lack of generality by using $n = 0$ rather than an arbitrary n - the main point is the product and addition of Taylor series.)

Filename: `product_arith_mean`.

Problem 7: Newton's method for linear problems

Suppose we have a linear system $F(u) = Au - b = 0$. Apply Newton's method to this system, and show that the method converges in one iteration. Filename: `Newton_linear`.

Exercise 8: Discretize a 1D problem with a nonlinear coefficient

We consider the problem

$$((1 + u^2)u')' = 1, \quad x \in (0, 1), \quad u(0) = u(1) = 0. \quad (97)$$

a) Discretize (97) by a centered finite difference method on a uniform mesh.

b) Discretize (97) by a finite element method with P1 elements of equal length. Use the Trapezoidal method to compute all integrals. Set up the resulting matrix system in symbolic form such that the equations can be compared with those in a).

Filename: `nonlin_1D_coeff_discretize`.

Exercise 9: Linearize a 1D problem with a nonlinear coefficient

We have a two-point boundary value problem

$$((1 + u^2)u')' = 1, \quad x \in (0, 1), \quad u(0) = u(1) = 0. \quad (98)$$

a) Construct a Picard iteration method for (98) without discretizing in space.

- b) Apply Newton's method to (98) without discretizing in space.
- c) Discretize (98) by a centered finite difference scheme. Construct a Picard method for the resulting system of nonlinear algebraic equations.
- d) Discretize (98) by a centered finite difference scheme. Define the system of nonlinear algebraic equations, calculate the Jacobian, and set up Newton's method for solving the system.
Filename: `nonlin_1D_coeff_linearize`.

Problem 10: Finite differences for the 1D Bratu problem

We address the so-called Bratu problem

$$u'' + \lambda e^u = 0, \quad x \in (0, 1), \quad u(0) = u(1) = 0, \quad (99)$$

where λ is a given parameter and u is a function of x . This is a widely used model problem for studying numerical methods for nonlinear differential equations. The problem (99) has an exact solution

$$u_e(x) = -2 \ln \left(\frac{\cosh\left(\left(x - \frac{1}{2}\right)\theta/2\right)}{\cosh(\theta/4)} \right),$$

where θ solves

$$\theta = \sqrt{2\lambda} \cosh(\theta/4).$$

There are two solutions of (99) for $0 < \lambda < \lambda_c$ and no solution for $\lambda > \lambda_c$. For $\lambda = \lambda_c$ there is one unique solution. The critical value λ_c solves

$$1 = \sqrt{2\lambda_c} \frac{1}{4} \sinh(\theta(\lambda_c)/4).$$

A numerical value is $\lambda_c = 3.513830719$.

- a) Discretize (99) by a centered finite difference method.
- b) Set up the nonlinear equations $F_i(u_0, u_1, \dots, u_{N_x}) = 0$ from a). Calculate the associated Jacobian.
- c) Implement a solver that can compute $u(x)$ using Newton's method. Plot the error as a function of x in each iteration.
- d) Investigate whether Newton's method gives second-order convergence by computing $\|u_e - u\|/\|u_e - u^-\|^2$ in each iteration, where u is solution in the current iteration and u^- is the solution in the previous iteration.
Filename: `nonlin_1D_Bratu_fd`.

Problem 11: Integrate functions of finite element expansions

We shall investigate integrals on the form

$$\int_0^L f\left(\sum_k u_k \varphi_k(x)\right) \varphi_i(x) dx, \quad (100)$$

where $\varphi_i(x)$ are P1 finite element basis functions and u_k are unknown coefficients, more precisely the values of the unknown function u at nodes x_k . We introduce a node numbering that goes

from left to right and also that all cells have the same length h . Given i , the integral only gets contributions from $[x_{i-1}, x_{i+1}]$. On this interval $\varphi_k(x) = 0$ for $k < i - 1$ and $k > i + 1$, so only three basis functions will contribute:

$$\sum_k u_k \varphi_k(x) = u_{i-1} \varphi_{i-1}(x) + u_i \varphi_i(x) + u_{i+1} \varphi_{i+1}(x).$$

The integral (100) now takes the simplified form

$$\int_{x_{i-1}}^{x_{i+1}} f(u_{i-1} \varphi_{i-1}(x) + u_i \varphi_i(x) + u_{i+1} \varphi_{i+1}(x)) \varphi_i(x) dx.$$

Split this integral in two integrals over cell L (left), $[x_{i-1}, x_i]$, and cell R (right), $[x_i, x_{i+1}]$. Over cell L, u simplifies to $u_{i-1} \varphi_{i-1} + u_i \varphi_i$ (since $\varphi_{i+1} = 0$ on this cell), and over cell R, u simplifies to $u_i \varphi_i + u_{i+1} \varphi_{i+1}$. Make a `sympy` program that can compute the integral and write it out as a difference equation. Give the $f(u)$ formula on the command line. Try out $f(u) = u^2, \sin u, \exp u$.

Hint. Introduce symbols `u_i`, `u_im1`, and `u_ip1` for u_i , u_{i-1} , and u_{i+1} , respectively, and similar symbols for x_i , x_{i-1} , and x_{i+1} . Find formulas for the basis functions on each of the two cells, make expressions for u on the two cells, integrate over each cell, expand the answer and simplify. You can ask `sympy` for \LaTeX code and render it either by creating a \LaTeX document and compiling it to a PDF document or by using <http://latex.codecogs.com> to display \LaTeX formulas in a web page. Here are some appropriate Python statements for the latter purpose:

```
from sympy import *
...
# expr_i holds the integral as a sympy expression
latex_code = latex(expr_i, mode='plain')
# Replace u_im1 sympy symbol name by latex symbol u_{i-1}
latex_code = latex_code.replace('im1', '{i-1}')
# Replace u_ip1 sympy symbol name by latex symbol u_{i+1}
latex_code = latex_code.replace('ip1', '{i+1}')
# Escape (quote) latex_code so it can be sent as HTML text
import cgi
html_code = cgi.escape(latex_code)
# Make a file with HTML code for displaying the LaTeX formula
f = open('tmp.html', 'w')
# Include an image that can be clicked on to yield a new
# page with an interactive editor and display area where the
# formula can be further edited
text = """
<a href="http://www.codecogs.com/eqnedit.php?latex=%(html_code)s"
target="blank">

</a>
""" % vars()
f.write(text)
f.close()
```

The formula is displayed by loading `tmp.html` into a web browser.
Filename: `fu_fem_int`.

Problem 12: Finite elements for the 1D Bratu problem

We address the same 1D Bratu problem as described in Problem 10.

- a) Discretize (12) by a finite element method using a uniform mesh with P1 elements. Use a group finite element method for the e^u term.

b) Set up the nonlinear equations $F_i(u_0, u_1, \dots, u_{N_x}) = 0$ from a). Calculate the associated Jacobian.

Filename: `nonlin_1D_Bratu_fe`.

Exercise 13: Discretize a nonlinear 1D heat conduction PDE by finite differences

We address the 1D heat conduction PDE

$$\varrho c(T)T_t = (k(T)T_x)_x,$$

for $x \in [0, L]$, where ϱ is the density of the solid material, $c(T)$ is the heat capacity, T is the temperature, and $k(T)$ is the heat conduction coefficient. $T(x, 0) = I(x)$, and ends are subject to a cooling law:

$$k(T)T_x|_{x=0} = h(T)(T - T_s), \quad -k(T)T_x|_{x=L} = h(T)(T - T_s),$$

where $h(T)$ is a heat transfer coefficient and T_s is the given surrounding temperature.

a) Discretize this PDE in time using either a Backward Euler or Crank-Nicolson scheme.

b) Formulate a Picard iteration method for the time-discrete problem (i.e., an iteration method before discretizing in space).

c) Formulate a Newton method for the time-discrete problem in b).

d) Discretize the PDE by a finite difference method in space. Derive the matrix and right-hand side of a Picard iteration method applied to the space-time discretized PDE.

e) Derive the matrix and right-hand side of a Newton method applied to the discretized PDE in d).

Filename: `nonlin_1D_heat_FD`.

Exercise 14: Use different symbols for different approximations of the solution

The symbol u has several meanings, depending on the context, as briefly mentioned in Section 5.1. Go through the derivation of the Picard iteration method in that section and use different symbols for all the different approximations of u :

- $u_e(\mathbf{x}, t)$ for the exact solution of the PDE problem
- $u_e(\mathbf{x})^n$ for the exact solution after time discretization
- $u^n(\mathbf{x})$ for the spatially discrete solution $\sum_j c_j \psi_j$
- $u^{n,k}$ for approximation in Picard/Newton iteration no k to $u^n(\mathbf{x})$

Filename: `nonlin_heat_FE_usymbols`.

Exercise 15: Derive Picard and Newton systems from a variational form

We study the multi-dimensional heat conduction PDE

$$\varrho c(T)T_t = \nabla \cdot (k(T)\nabla T)$$

in a spatial domain Ω , with a nonlinear Robin boundary condition

$$-k(T)\frac{\partial T}{\partial n} = h(T)(T - T_s(t)),$$

at the boundary $\partial\Omega$. The primary unknown is the temperature T , ϱ is the density of the solid material, $c(T)$ is the heat capacity, $k(T)$ is the heat conduction, $h(T)$ is a heat transfer coefficient, and $T_s(T)$ is a possibly time-dependent temperature of the surroundings.

a) Use a Backward Euler or Crank-Nicolson time discretization and derive the variational form for the spatial problem to be solved at each time level.

b) Define a Picard iteration method from the variational form at a time level.

c) Derive expressions for the matrix and the right-hand side of the equation system that arises from applying Newton's method to the variational form at a time level.

d) Apply the Backward Euler or Crank-Nicolson scheme in time first. Derive a Newton method at the PDE level. Make a variational form of the resulting PDE at a time level.

Filename: `nonlin_heat_FE`.

Exercise 16: Derive algebraic equations for nonlinear 1D heat conduction

We consider the same problem as in Exercise 15, but restricted to one space dimension: $\Omega = [0, L]$. Simplify the boundary condition to $T_x = 0$ (i.e., $h(T) = 0$). Use a uniform finite element mesh of P1 elements, the group finite element method, and the Trapezoidal rule for integration at the nodes to derive symbolic expressions for the algebraic equations arising from this diffusion problem. Filename: `nonlin_1D_heat_FE`.

Exercise 17: Differentiate a highly nonlinear term

The operator $\nabla \cdot (\alpha(u)\nabla u)$ with $\alpha(u) = |\nabla u|^q$ appears in several physical problems, especially flow of Non-Newtonian fluids. The expression $|\nabla u|$ is defined as the Euclidean norm of a vector: $|\nabla u|^2 = \nabla u \cdot \nabla u$. In a Newton method one has to carry out the differentiation $\partial\alpha(u)/\partial c_j$, for $u = \sum_k c_k \psi_k$. Show that

$$\frac{\partial}{\partial u_j} |\nabla u|^q = q |\nabla u|^{q-2} \nabla u \cdot \nabla \psi_j.$$

Filename: `nonlin_differentiate`.

Exercise 18: Crank-Nicolson for a nonlinear 3D diffusion equation

Redo Section 5.2 when a Crank-Nicolson scheme is used to discretize the equations in time and the problem is formulated for three spatial dimensions.

Hint. Express the Jacobian as $J_{i,j,k,r,s,t} = \partial F_{i,j,k} / \partial u_{r,s,t}$ and observe, as in the 2D case, that $J_{i,j,k,r,s,t}$ is very sparse: $J_{i,j,k,r,s,t} \neq 0$ only for $r = i \pm 1$, $s = j \pm 1$, and $t = k \pm 1$ as well as $r = i$, $s = j$, and $t = k$.

Filename: `nonlin_heat_FD_CN_2D`.

Exercise 19: Find the sparsity of the Jacobian

Consider a typical nonlinear Laplace term like $\nabla \cdot \alpha(u) \nabla u$ discretized by centered finite differences. Explain why the Jacobian corresponding to this term has the same sparsity pattern as the matrix associated with the corresponding linear term $\alpha \nabla^2 u$.

Hint. Set up the unknowns that enter the difference equation at a point (i, j) in 2D or (i, j, k) in 3D, and identify the nonzero entries of the Jacobian that can arise from such a type of difference equation.

Filename: `nonlin_sparsity_Jacobian`.

Problem 20: Investigate a 1D problem with a continuation method

Flow of a pseudo-plastic power-law fluid between two flat plates can be modeled by

$$\frac{d}{dx} \left(\mu_0 \left| \frac{du}{dx} \right|^{n-1} \frac{du}{dx} \right) = -\beta, \quad u'(0) = 0, \quad u(H) = 0,$$

where $\beta > 0$ and $\mu_0 > 0$ are constants. A target value of n may be $n = 0.2$.

- Formulate a Picard iteration method directly for the differential equation problem.
- Perform a finite difference discretization of the problem in each Picard iteration. Implement a solver that can compute u on a mesh. Verify that the solver gives an exact solution for $n = 1$ on a uniform mesh regardless of the cell size.
- Given a sequence of decreasing n values, solve the problem for each n using the solution for the previous n as initial guess for the Picard iteration. This is called a continuation method. Experiment with $n = (1, 0.6, 0.2)$ and $n = (1, 0.9, 0.8, \dots, 0.2)$ and make a table of the number of Picard iterations versus n .
- Derive a Newton method at the differential equation level and discretize the resulting linear equations in each Newton iteration with the finite difference method.
- Investigate if Newton's method has better convergence properties than Picard iteration, both in combination with a continuation method.

References

- C. T. Kelley. *Iterative Methods for Linear and Nonlinear Equations*. SIAM, 1995.
- M. Mortensen, H. P. Langtangen, and G. N. Wells. A FEniCS-based programming framework for modeling turbulent flow by the Reynolds-averaged Navier-Stokes equations. *Advances in Water Resources*, 34(9), 2011.

A Symbolic nonlinear finite element equations

The integrals in nonlinear finite element equations are computed by numerical integration rules in computer programs, so the formulas for the variational form are directly transferred to numbers. It is also of interest to understand the nature of the system of difference equations that arises from the finite element method in nonlinear problems and to compare with corresponding expressions arising from finite difference discretization. We shall dive into this problem here. To see the structure of the difference equations implied by the finite element method, we have to find symbolic expressions for the integrals, and this is extremely difficult since the integrals involve the unknown function in nonlinear problems. However, there are some techniques that allow us to approximate the integrals and work out symbolic formulas that can be compared with their finite difference counterparts.

We shall address the 1D model problem (50) from the beginning of Section 4. The finite difference discretization is shown in Section 4.1, while the variational form based on Galerkin's method is developed in Section 4.3. We build directly on formulas developed in the latter section.

A.1 Finite element basis functions

Introduction of finite element basis functions φ_i means setting

$$\psi_i = \varphi_{\nu(i)}, \quad i \in \mathcal{I}_s,$$

where degree of freedom number $\nu(i)$ in the mesh corresponds to unknown number i (c_i). In the present example, we use all the basis functions except the last at $i = N_n - 1$, i.e., $\mathcal{I}_s = \{0, \dots, N_n - 2\}$, and $\nu(j) = j$. The expansion of u can be taken as

$$u = D + \sum_{j \in \mathcal{I}_s} c_j \varphi_{\nu(j)},$$

but it is more common in a finite element context to use a boundary function $B = \sum_{j \in I_b} U_j \varphi_j$, where U_j is prescribed Dirichlet condition for degree of freedom number j and U_j is the corresponding value.

$$u = D \varphi_{N_n-1} + \sum_{j \in \mathcal{I}_s} c_j \varphi_{\nu(j)}.$$

In the general case with u prescribed as U_j at some nodes $j \in I_b$, we set

$$u = \sum_{j \in I_b} U_j \varphi_j + \sum_{j \in \mathcal{I}_s} c_j \varphi_{\nu(j)},$$

where $c_j = u(x_{\nu(j)})$. That is, $\nu(j)$ maps unknown number j to the corresponding node number $\nu(j)$ such that $c_j = u(x_{\nu(j)})$.

A.2 The group finite element method

Finite element approximation of functions of u . Since we already expand u as $\sum_j \varphi_j u(x_j)$, we may use the same approximation for other functions as well. For example,

$$f(u) \approx \sum_j f(x_j) \varphi_j,$$

where $f(x_j)$ is the value of f at node j . Since f is a function of u , $f(x_j) = f(u(x_j))$. Introducing u_j as a short form for $u(x_j)$, we can write

$$f(u) \approx \sum_j f(u_j) \varphi_j.$$

This approximation is known as the *group finite element method* or the *product approximation* technique. The index j runs over all node numbers in the mesh.

The principal advantages of the group finite element method are two-fold:

1. Complicated nonlinear expressions can be simplified to increase the efficiency of numerical computations.
2. One can derive *symbolic forms* of the difference equations arising from the finite element method in nonlinear problems. The symbolic form is useful for comparing finite element and finite difference equations of nonlinear differential equation problems.

Below, we shall explore point 2 to see exactly how the finite element method creates more complex expressions in the resulting linear system (the difference equations) that the finite difference method does. It turns out that it is very difficult to see what kind of terms in the difference equations that arise from $\int f(u) \varphi_i dx$ without using the group finite element method or numerical integration utilizing the nodes only.

Note, however, that an expression like $\int f(u) \varphi_i dx$ causes no problems in a computer program as the integral is calculated by numerical integration using an existing approximation of u in $f(u)$ such that the integrand can be sampled at any spatial point.

Simplified problem. Our aim now is to derive symbolic expressions for the difference equations arising from the finite element method in nonlinear problems and compare the expressions with those arising in the finite difference method. To this end, let us simplify the model problem and set $a = 0$, $\alpha = 1$, $f(u) = u^2$, and have Neumann conditions at both ends such that we get a very simple nonlinear problem $-u'' = u^2$, $u'(0) = 1$, $u'(L) = 0$. The variational form is then

$$\int_0^L u'v' dx = \int_0^L u^2v dx - v(0), \quad \forall v \in V.$$

The term with $u'v'$ is well known so the only new feature is the term $\int u^2v dx$.

To make the distance from finite element equations to finite difference equations as short as possible, we shall substitute c_j in the sum $u = \sum_j c_j \varphi_j$ by $u_j = u(x_j)$ since c_j is the value of u at node j . (In the more general case with Dirichlet conditions as well, we have a sum $\sum_j c_j \varphi_{\nu(j)}$ where c_j is replaced by $u(x_{\nu(j)})$. We can then introduce some other counter k such that it is meaningful to write $u = \sum_k u_k \varphi_k$, where k runs over appropriate node numbers.) The quantity u_j in $\sum_j u_j \varphi_j$ is the same as u at mesh point number j in the finite difference method, which is commonly denoted u_j .

Integrating nonlinear functions. Consider the term $\int u^2v dx$ in the variational formulation with $v = \varphi_i$ and $u = \sum_k \varphi_k u_k$:

$$\int_0^L \left(\sum_k u_k \varphi_k \right)^2 \varphi_i dx.$$

Evaluating this integral for P1 elements (see Problem 11) results in the expression

$$\frac{h}{12} (u_{i-1}^2 + 2u_i(u_{i-1} + u_{i+1}) + 6u_i^2 + u_{i+1}^2),$$

to be compared with the simple value u_i^2 that would arise in a finite difference discretization when u^2 is sampled at mesh point x_i . More complicated $f(u)$ functions in the integral $\int_0^L f(u) \varphi_i dx$ give rise to much more lengthy expressions, if it is possible to carry out the integral symbolically at all.

Application of the group finite element method. Let us use the group finite element method to derive the terms in the difference equation corresponding to $f(u)$ in the differential equation. We have

$$\int_0^L f(u) \varphi_i dx \approx \int_0^L \left(\sum_j \varphi_j f(u_j) \right) \varphi_i dx = \sum_j \left(\int_0^L \varphi_i \varphi_j dx \right) f(u_j).$$

We recognize this expression as the mass matrix M , arising from $\int \varphi_i \varphi_j dx$, times the vector $f = (f(u_0), f(u_1), \dots)$: Mf . The associated terms in the difference equations are, for P1 elements,

$$\frac{h}{6} (f(u_{i-1}) + 4f(u_i) + f(u_{i+1})).$$

Occasionally, we want to interpret this expression in terms of finite differences, and to this end a rewrite of this expression is convenient:

$$\frac{h}{6} (f(u_{i-1}) + 4f(u_i) + f(u_{i+1})) = h \left[f(u) - \frac{h^2}{6} D_x D_x f(u) \right]_i.$$

That is, the finite element treatment of $f(u)$ (when using a group finite element method) gives the same term as in a finite difference approach, $f(u_i)$, minus a diffusion term which is the 2nd-order discretization of $\frac{1}{6} h^2 f''(x_i)$.

We may lump the mass matrix through integration with the Trapezoidal rule so that M becomes diagonal in the finite element method. In that case the $f(u)$ term in the differential equation gives rise to a single term $hf(u_i)$, just as in the finite difference method.

A.3 Numerical integration of nonlinear terms by hand

Let us reconsider a term $\int f(u)v dx$ as treated in the previous section, but now we want to integrate this term numerically. Such an approach can lead to easy-to-interpret formulas if we apply a numerical integration rule that samples the integrand at the node points x_i only, because at such points, $\varphi_j(x_i) = 0$ if $j \neq i$, which leads to great simplifications.

The term in question takes the form

$$\int_0^L f \left(\sum_k u_k \varphi_k \right) \varphi_i dx.$$

Evaluation of the integrand at a node x_ℓ leads to a collapse of the sum $\sum_k u_k \varphi_k$ to one term because

$$\sum_k u_k \varphi_k(x_\ell) = u_\ell.$$

$$f\left(\sum_k u_k \underbrace{\varphi_k(x_\ell)}_{\delta_{k\ell}}\right) \underbrace{\varphi_i(x_\ell)}_{\delta_{i\ell}} = f(u_\ell) \delta_{i\ell},$$

where we have used the Kronecker delta: $\delta_{ij} = 0$ if $i \neq j$ and $\delta_{ij} = 1$ if $i = j$.

Considering the Trapezoidal rule for integration, where the integration points are the nodes, we have

$$\int_0^L f\left(\sum_k u_k \varphi_k(x)\right) \varphi_i(x) dx \approx h \sum_{\ell=0}^{N_n-1} f(u_\ell) \delta_{i\ell} - C = hf(u_i).$$

This is the same representation of the f term as in the finite difference method. The term C contains the evaluations of the integrand at the ends with weight $\frac{1}{2}$, needed to make a true Trapezoidal rule:

$$C = \frac{h}{2} f(u_0) \varphi_i(0) + \frac{h}{2} f(u_{N_n-1}) \varphi_i(L).$$

The answer $hf(u_i)$ must therefore be multiplied by $\frac{1}{2}$ if $i = 0$ or $i = N_n - 1$. Note that $C = 0$ for $i = 1, \dots, N_n - 2$.

One can alternatively use the Trapezoidal rule on the reference cell and assemble the contributions. It is a bit more labor in this context, but working on the reference cell is safer as that approach is guaranteed to handle discontinuous derivatives of finite element functions correctly (not important in this particular example), while the rule above was derived with the assumption that f is continuous at the integration points.

The conclusion is that it suffices to use the Trapezoidal rule if one wants to derive the difference equations in the finite element method and make them similar to those arising in the finite difference method. The Trapezoidal rule has sufficient accuracy for P1 elements, but for P2 elements one should turn to Simpson's rule.

A.4 Finite element discretization of a variable coefficient Laplace term

Turning back to the model problem (50), it remains to calculate the contribution of the $(\alpha u)'$ and boundary terms to the difference equations. The integral in the variational form corresponding to $(\alpha u)'$ is

$$\int_0^L \alpha \left(\sum_k c_k \varphi_k \right) \varphi'_i \varphi'_j dx.$$

Numerical integration utilizing a value of $\sum_k c_k \varphi_k$ from a previous iteration must in general be used to compute the integral. Now our aim is to integrate symbolically, as much as we can, to obtain some insight into how the finite element method approximates this term. To be able to derive symbolic expressions, we must either turn to the group finite element method or numerical integration in the node points. Finite element basis functions φ_i are now used.

Group finite element method. We set $\alpha(u) \approx \sum_k \alpha(u_k) \varphi_k$, and then we write

$$\int_0^L \alpha \left(\sum_k c_k \varphi_k \right) \varphi'_i \varphi'_j dx \approx \sum_k \underbrace{\left(\int_0^L \varphi_k \varphi'_i \varphi'_j dx \right)}_{L_{i,j,k}} \alpha(u_k) = \sum_k L_{i,j,k} \alpha(u_k).$$

Further calculations are now easiest to carry out in the reference cell. With P1 elements we can compute $L_{i,j,k}$ for the two k values that are relevant on the reference cell. Turning to local indices, one gets

$$L_{r,s,t}^{(e)} = \frac{1}{2h} \begin{pmatrix} 1 & -1 \\ -1 & 1 \end{pmatrix}, \quad t = 0, 1,$$

where $r, s, t = 0, 1$ are indices over local degrees of freedom in the reference cell ($i = q(e, r)$, $j = q(e, s)$, and $k = q(e, t)$). The sum $\sum_k L_{i,j,k} \alpha(u_k)$ at the cell level becomes $\sum_{t=0}^1 L_{r,s,t}^{(e)} \alpha(\tilde{u}_t)$, where \tilde{u}_t is $u(x_{q(e,t)})$, i.e., the value of u at local node number t in cell number e . The element matrix becomes

$$\frac{1}{2} (\alpha(\tilde{u}_0) + \alpha(\tilde{u}_1)) \frac{1}{h} \begin{pmatrix} 1 & -1 \\ -1 & 1 \end{pmatrix}. \quad (101)$$

As usual, we employ a left-to-right numbering of cells and nodes. Row number i in the global matrix gets contributions from the first row of the element matrix in cell i and the last row of the element matrix in cell $i-1$. In cell number $i-1$ the sum $\alpha(\tilde{u}_0) + \alpha(\tilde{u}_1)$ corresponds to $\alpha(u_{i-1}) + \alpha(u_i)$. The same sum becomes $\alpha(u_i) + \alpha(u_{i+1})$ in cell number i . We can with this insight assemble the contributions to row number i in the global matrix:

$$\frac{1}{2h} (-\alpha(u_{i-1}) + \alpha(u_i)), \quad \alpha(u_{i-1}) + 2\alpha(u_i) + \alpha(u_{i+1}), \quad -(\alpha(u_i) + \alpha(u_{i+1})).$$

Multiplying by the vector of unknowns u_i results in a formula that can be arranged to

$$-\frac{1}{h} \left(\frac{1}{2} (\alpha(u_i) + \alpha(u_{i+1})) (u_{i+1} - u_i) - \frac{1}{2} (\alpha(u_{i-1}) + \alpha(u_i)) (u_i - u_{i-1}) \right), \quad (102)$$

which is nothing but the standard finite difference discretization of $-(\alpha(u)u)'$ with an arithmetic mean of $\alpha(u)$ (and the usual factor h because of the integration in the finite element method).

Numerical integration at the nodes. Instead of using the group finite element method and exact integration we can turn to the Trapezoidal rule for computing $\int_0^L \alpha(\sum_k u_k \varphi_k) \varphi'_i \varphi'_j dx$, again at the cell level since that is most convenient when we deal with discontinuous functions φ'_i :

$$\begin{aligned} \int_{-1}^1 \alpha \left(\sum_t \tilde{u}_t \tilde{\varphi}_t \right) \tilde{\varphi}'_r \tilde{\varphi}'_s \frac{h}{2} dX &= \int_{-1}^1 \alpha \left(\sum_{t=0}^1 \tilde{u}_t \tilde{\varphi}_t \right) \frac{2}{h} \frac{d\tilde{\varphi}_r}{dX} \frac{2}{h} \frac{d\tilde{\varphi}_s}{dX} \frac{h}{2} dX \\ &= \frac{1}{2h} (-1)^r (-1)^s \int_{-1}^1 \alpha \left(\sum_{t=0}^1 \tilde{u}_t \tilde{\varphi}_t(X) \right) dX \\ &\approx \frac{1}{2h} (-1)^r (-1)^s \alpha \left(\sum_{t=0}^1 \tilde{\varphi}_t(-1) \tilde{u}_t \right) + \alpha \left(\sum_{t=0}^1 \tilde{\varphi}_t(1) \tilde{u}_t \right) \\ &= \frac{1}{2h} (-1)^r (-1)^s (\alpha(\tilde{u}_0) + \alpha(\tilde{u}_1)). \end{aligned} \quad (103)$$

The element matrix in (103) is identical to the one in (101), showing that the group finite element method and Trapezoidal integration are equivalent with a standard finite discretization of a nonlinear Laplace term $(\alpha(u)u)'$ using an arithmetic mean for α : $[D_x \bar{x} D_x u]_i$.

Remark about integration in the physical x coordinate.

We might comment on integration in the physical coordinate system too. The common Trapezoidal rule in Section A.3 cannot be used to integrate derivatives like φ'_i , because the formula is derived under the assumption of a continuous integrand. One must instead use the more basic version of the Trapezoidal rule where all the trapezoids are summed up. This is straightforward, but I think it is even more straightforward to apply the Trapezoidal rule on the reference cell and assemble the contributions.

The term $\int auv dx$ in the variational form is linear and gives these terms in the algebraic equations:

$$\frac{ah}{6}(u_{i-1} + 4u_i + u_{i+1}) = ah[u - \frac{h^2}{6}D_x D_x u]_i.$$

The final term in the variational form is the Neumann condition at the boundary: $Cv(0) = C\varphi_i(0)$. With a left-to-right numbering only $i = 0$ will give a contribution $Cv(0) = C\delta_{i0}$ (since $\varphi_i(0) \neq 0$ only for $i = 0$).

Summary.

For the equation

$$-(\alpha(u)u')' + au = f(u),$$

P1 finite elements result in difference equations where

- the term $-(\alpha(u)u')'$ becomes $-h[D_x \overline{\alpha(u)} D_x u]_i$ if the group finite element method or Trapezoidal integration is applied,
- $f(u)$ becomes $hf(u_i)$ with Trapezoidal integration or the “mass matrix” representation $h[f(u) - \frac{h^2}{6}D_x D_x f(u)]_i$ if computed by a group finite element method,
- au leads to the “mass matrix” form $ah[u - \frac{h^2}{6}D_x D_x u]_i$.

As we now have explicit expressions for the nonlinear difference equations also in the finite element method, a Picard or Newton method can be defined as shown for the finite difference method. However, our effort in deriving symbolic forms of the difference equations in the finite element method was motivated by a desire to see how nonlinear terms in differential equations make the finite element and difference method different. For practical calculations in computer programs we apply numerical integration, normally the more accurate Gauss-Legendre quadrature rules, to the integrals directly. This allows us to easily *evaluate* the nonlinear algebraic equations for a given numerical approximation of u (here denoted u^-). To *solve* the nonlinear algebraic equations we need to apply the Picard iteration method or Newton’s method to the variational form directly, as shown next.

Index

continuation method, 41, 49

fixed-point iteration, 7

group finite element method, 52

`latex.codecogs.com` web site, 45

linearization, 7

 explicit time integration, 6

 fixed-point iteration, 7

 Picard iteration, 7

 successive substitutions, 7

online rendering of L^AT_EX formulas, 45

Picard iteration, 7

product approximation technique, 52

relaxation (nonlinear equations), 11

single Picard iteration technique, 8

stopping criteria (nonlinear problems), 8, 21

successive substitutions, 7